

ESTIMATION OF NUTRITIVE VALUE OF “NANNARI KANJI” AND EVALUATION OF ITS ANTI-BACTERIAL ACTIVITY AGAINST *STAPHYLOCOCCUS AUREUS*, A RESPIRATORY PATHOGEN BY *IN VITRO* METHOD

SOWMYA S^{1*}, SUDHA REVATHY S¹, MEENAKUMARI R²

¹Department of Gunapadam, National Institute of Siddha, Chennai, Tamil Nadu, India. ²Director, National Institute of Siddha, Chennai, Tamil Nadu, India.

*Corresponding author: Sowmya S; Email: sowmyaselvam55@gmail.com

Received: 22 July 2024, Revised and Accepted: 21 September 2024

ABSTRACT

Objective: To estimate the nutritive value of Nannari Kanji. To evaluate the beneficial effect of Nannari Kanji against the respiratory pathogen, *Staphylococcus aureus*. To analyze the minerals present in Nannari Kanji.

Methods: Nannari Kanji is a polyherbal formulation prepared using Nannari, Karunguruvai rice, and coconut milk by simple boiling method. In the present study, the Nutritive value of Nannari Kanji was analyzed and its antimicrobial activity was studied in terms of minimum inhibitory concentration against the respiratory pathogen, *S. aureus*. In addition to that mineral analysis was performed using the ICP-OES instrument.

Results: In the nutritive analysis, protein (26.83%) was present in large amounts. The antimicrobial activity showed an inhibitory effect against *S. aureus* at the concentration of 527.02 µg/mL. The mineral analysis confirms the presence of magnesium, iron, and zinc of which magnesium shows a higher value (192.06 ppm).

Discussion and Conclusion: Nannari Kanji has potent antimicrobial activity against *S. aureus*. It has more protein and fat content, which is useful in suppressing respiratory infections. Nannari Kanji contains good magnesium content which is considered to be a good antimicrobial agent.

Keywords: Nannari Kanji, Respiratory infection, Nutritional value, Siddha medicine.

© 2024 The Authors. Published by Innovare Academic Sciences Pvt Ltd. This is an open access article under the CC BY license (<http://creativecommons.org/licenses/by/4.0/>) DOI: <http://dx.doi.org/10.22159/ajpcr.2024v17i11.52128>. Journal homepage: <https://innovareacademics.in/journals/index.php/ajpcr>

INTRODUCTION

The Siddha system is a unique system of medicine that ultimately aims to maintain three vital humors and seven physical constituents in equilibrium. In the Siddha system of medicine, diet and way of life assume a significant part in treating and forestalling illnesses [1]. Food serves as a vital nutritional and healing source. It is valuable in recapturing the decreased strength during the post-treatment time. A number of disorders occur due to improper dietary practices that affect the balance of the three humors (uyir thaathukkal) and physical elements (udal thaathukkal).

“Unavae marunthu, marunthae unavu”

This verse says that diet can act as medicine and explains the importance of diet. Kanji is one of the most popular and regular foods which has been in use since olden times obtained by boiling rice with different kinds of grains from which they derive their names and accordingly, there are 27 types of Kanji [2]. In particular for all children, kanji is a very well-balanced diet. It is a very good immune system builder. It contributes to the maintenance of a healthy lifestyle and helps protect us from diseases by boosting immunity [3]. It promotes healthy digestion and cleans the body inside. A polyherbal formulation Nannari Kanji mentioned in *Brahmamuni Maruthuva Vilakam* is a dietary supplement indicated for respiratory and gastric ailments. Nannari Kanji was made using Nannari, Karunguruvai rice, and coconut milk by simple boiling method [4].

According to disability-adjusted life years, which measure the burden of sickness around the world, 41% of it is still related to infectious diseases. Nearly 545 million people worldwide had a chronic respiratory condition in 2017, an increase of 39.8% since 1990,

according to the Lancet Respiratory Medicine. About 3.9 million people died from chronic respiratory disorders in 2017 (an increase of 18% from 1990) [5].

Staphylococcus aureus is a Gram-positive, spherical-shaped bacterium that is typically found in the body's microbiota and on the skin and upper respiratory tract. Despite being a frequent source of food poisoning, sinusitis, and other respiratory illnesses as well as skin infections such as abscesses [6]. There had previously been no other work done in Nannari Kanji. Hence, this study is aimed to evaluate the nutritive value of Nannari Kanji, exploring its antimicrobial activity against the respiratory pathogen, *S. aureus*, and analyzing the elements present in Nannari Kanji.

METHODS

Drug profile

The raw drugs for the Nannari Kanji preparation were purchased from a well-reputed country raw drug shop and drugs were authenticated by the Assistant Professor, Department of Medicinal Botany, National Institute of Siddha, Chennai, Tamil Nadu. After that the drugs were purified separately then the Nannari Kanji was prepared in the Gunapadam Laboratory of the National Institute of Siddha as per the literature. The ingredients of Nannari Kanji are Nannari root (*Hemidesmus indicus*), old Karunguruvai rice (black paddy rice), water, and coconut milk (Fig. 1). The root of Nannari was ground to the size of a lemon and kept aside (Fig. 2a). In an earthen pot, old Karunguruvai rice was cooked with water without the addition of salt. The ground Nannari root was added to the pot after the rice boiled up and then added the It was heated until it attains that equals the weight of *Nannari Karkam* (Fig. 2b). It was heated until it attained the consistency of porridge (Fig. 2c). It is indicated for Irumal, Illaippu, Uppisam, and Yengal [4].

Nutritive value analysis

Estimation of carbohydrates by anthrone method

From the supplied stock solution (10 mg/mL), samples of different concentrations of glucose (20, 40, 60, 80, and 100 µg) (Table 1) were pipetted out and made up to a volume of 1 mL with distilled water (Fig. 3a). 5 mL of the anthrone reagent (2 g of anthrone dissolved in 1 L of concentrated H₂SO₄) was added to each tube and mixed thoroughly by vortexing. The tubes were cooled. The tubes were then placed in a boiling water bath for 10 min or incubated at 90°C for 17 min with marbles or caps on top. At normal temperature, the optical density at 660 nm was evaluated in comparison to a blank. A standard curve of glucose concentration and absorbance was created (Fig. 3b) [7].

Estimation of protein by Lowry's method

Reagent

- 2% Na₂CO₃ in 0.1 N NaOH
- 1% NaK Tartrate in H₂O
- 0.5% CuSO₄·5 H₂O in H₂O
- Reagent I: 48 mL of A, 1 mL of B, and 1 mL of C
- Reagent II: 1 part Folin-Phenol (2 N):1 part water.

Procedure

Different concentrations (20, 40, 60, 80, and 100 µg) (Table 2) of BSA working standard (1 mg/mL) were taken in five test tubes and samples (50



Fig. 1: Ingredients of Nannari Kanji (a-c). (a) Nannari root powder. (b) Karunguruvai rice powder. (c) Coconut milk

Table 1: Absorbance at different concentrations of carbohydrates

Concentration (µg/ml) glucose	Absorbance at 660 nm
20	0.09
40	0.14
60	0.24
80	0.34
100	0.40

Table 2: Absorbance at different concentrations of protein

Concentration (µg/mL)	Absorbance at 660 nm
BSA	
20	0.02
40	0.05
60	0.07
80	0.09
100	0.13

Table 3: Absorbance of different concentrations of samples

Concentration (µg/mL)	Optical density@600 nm
200	0.799
400	0.798
600	0.627
800	0.514
1000	0.441

and 100 µg) and made up to 1 mL using distilled water. A test tube containing 1 mL of distilled water was used as a control. After adding reagent I, 4.5 mL was incubated for 10 min. 30 min of incubation followed by the addition of 0.5 mL of reagent II. The standard graph was used to measure and illustrate the absorbance at 660 nm (Fig. 4). The standard graph was used to estimate the amount of protein in the sample that was provided [8].

Estimation of fat content

The sample 2 g was weighed. While the sample was still heated, 0.5 mL of hexane was added. The two layers of oil and hexane (two phases) were separated by a thorough shaking. Hexane was evaporating while the tubes were held on a heated mantle. The remaining oil content was weighed and calculated [9].

Estimation of crude fiber

200 mL of 0.128 M sulfuric acid up to the 150 mL notch was added to 2 g of ground sample. It was preheated by the hot plate. Then it was boiled for 30 min. The solution was filtered onto a separate apparatus



Fig. 2: Nannari Kanji preparation (a-c). (a) Nannari Karkam. (b) Boiling stage. (c) Final stage

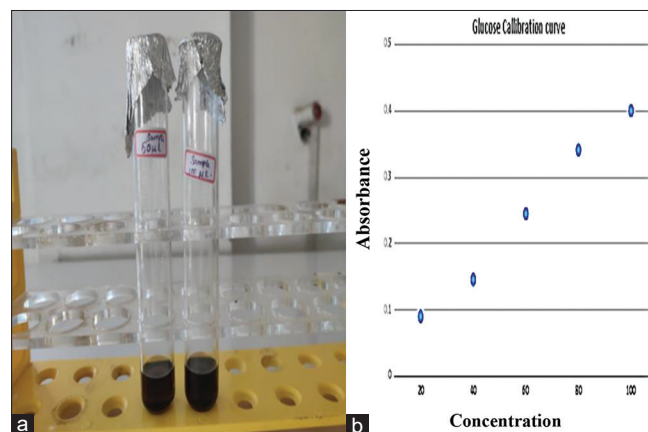


Fig. 3: (a) Carbohydrate estimation. (b) Calibration of glucose

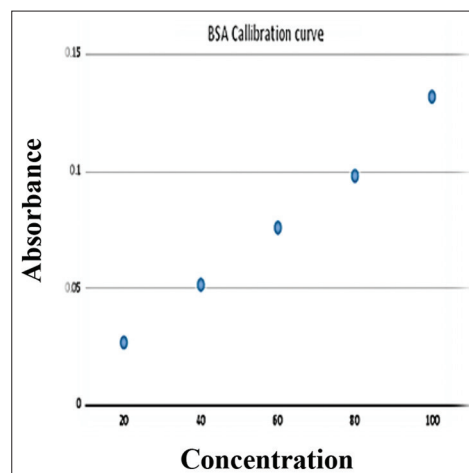


Fig. 4: Calibration of BSA

using a cloth. Washed 3 times with 30 mL (crucible filled up to the top) of hot deionized water. After draining the last wash, 200 mL of 0.313 M pre-heated sodium hydroxide (NaOH) was added to that. Again, it was boiled for 30 min. Then it was filtered and washed. Finally, the crucibles were cleaned with cold, deionized water to help them cool. The crucibles were removed and the dry weight after drying in an oven at 105°C for an hour or up to constant weight was determined. Cooled in a desiccator. This weight, relative to the initial weight shows the crude fiber plus ash content [10].

Antimicrobial activity

The sample was tested for antibacterial activity against *S. aureus* using the microdilution method. Luria broth (Himedia, Mumbai) was prepared and sterilized by autoclaving for 15 min at 121°C, 15 lbs. Each test tube received 3 mL of broth. Each sample (200 µg/ml, 400 µg/ml, 600 µg/ml, 800 µg/ml, and 1000 µg/ml) (Fig. 5a) was put to each test tube at three different concentrations. Azithromycin (100 µl from 10mg/ml) was also added to the broth. After that, 5 µl of log phase culture was added. This functioned as a positive control. As a control, sterile broth is used (Fig. 5b). For every well, 5 µl of log phase culture was added (Fig. 6). The broth was incubated at 37°C for 24 hours. The absorbance of the broth that was incubated was measured using a spectrophotometer that was set to 600 nm (Table 3). At the lowest concentration of the sample, the minimum inhibitory concentration (MIC) was determined by calculating the entire suppression of growth [11].

Mineral analysis

In a Teflon microwave digestion vessel, 50 mg of sample was inserted, and 1 mL of ultrapure nitric acid was added for 45 min of digestion using Anton Paar microwave digestion equipment. In a standard measuring flask, the substance was diluted to 50 mL. Using ultrapure nitric acid and a blank, the calibration standard solution was created in concentrations ranging from 0.25 g/mL to 10 g/mL (Figs. 7 and 8). The RF power of the Agilent ICP-OES 5100 VDV apparatus is 1.2 kW, the plasma gas flow rate is 12 L min⁻¹, and the nebulizer gas flow rate is 0.70 L min⁻¹. A nebulizer and spray chamber are used to inject the samples into the plasma for analysis.

RESULTS

The amount of glucose in the unknown sample was calculated by plotting a standard curve of A620 on the Y-axis and µg of glucose on the X-axis.

Estimation of fat content

The percentage fat (wet weight basis) was calculated as follows:

$$\text{Yield} = \frac{\text{Grams of extracted obtained}}{\text{Grams of sample used for extraction}} \times 100$$

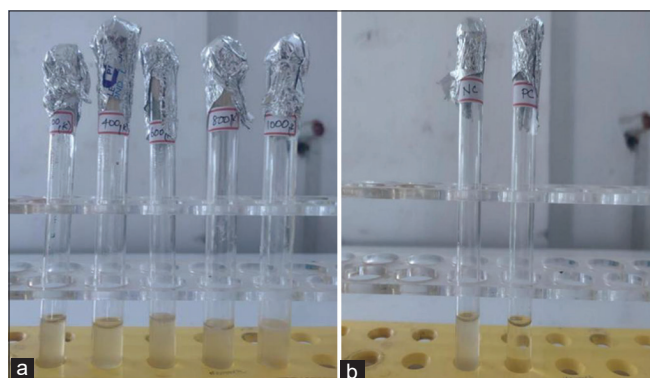


Fig. 5: (a) Different concentrations of samples treated with *Staphylococcus aureus*. (b) Percentage viability of *Staphylococcus aureus* treated with sample

Estimation of crude fiber

The percentage of crude fiber (wet weight basis) was calculated as follows:

$$\text{Yield} = \frac{\text{Grams of extracted obtained}}{\text{Grams of sample used for extraction}} \times 100$$

Antimicrobial activity

$$\text{Percentage viability} = \frac{\text{Number of unstained cells}}{\text{Total number of cells}} \times 100$$

Mineral analysis

Calibration curves should be made with standards that match the expected concentration range of the elements in your sample.

DISCUSSION

Kanji is high in nutrition, primarily carbohydrates, proteins, fats, fiber, vitamins, and minerals, all of which aid in digestion. It is an excellent source of energy, which boosts immunity and helps to prevent disease [12]. Nannari Kanji is simple to prepare and can be included in our diet, especially for children. Nannari Kanji is suitable for children because it has no taste. Respiratory infections are more common in

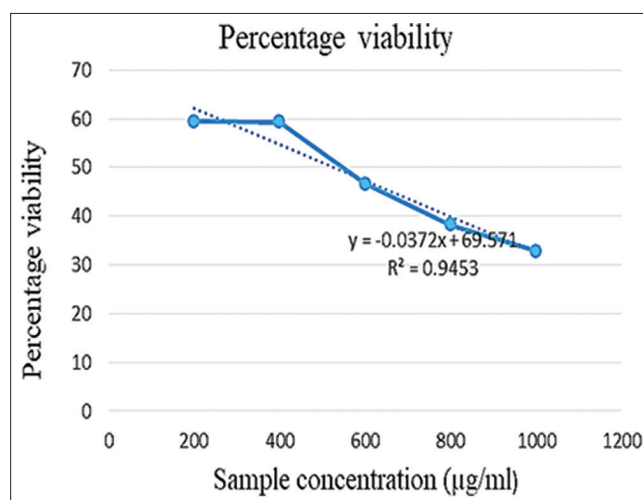


Fig. 6: Percentage viability of *S. aureus* treated with sample

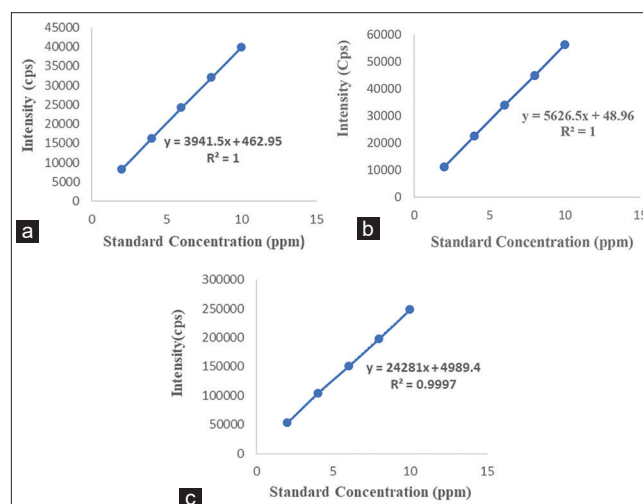


Fig. 7: Linearity graphs of standard solutions. (a) Iron, (b) Zinc, and (c) Magnesium

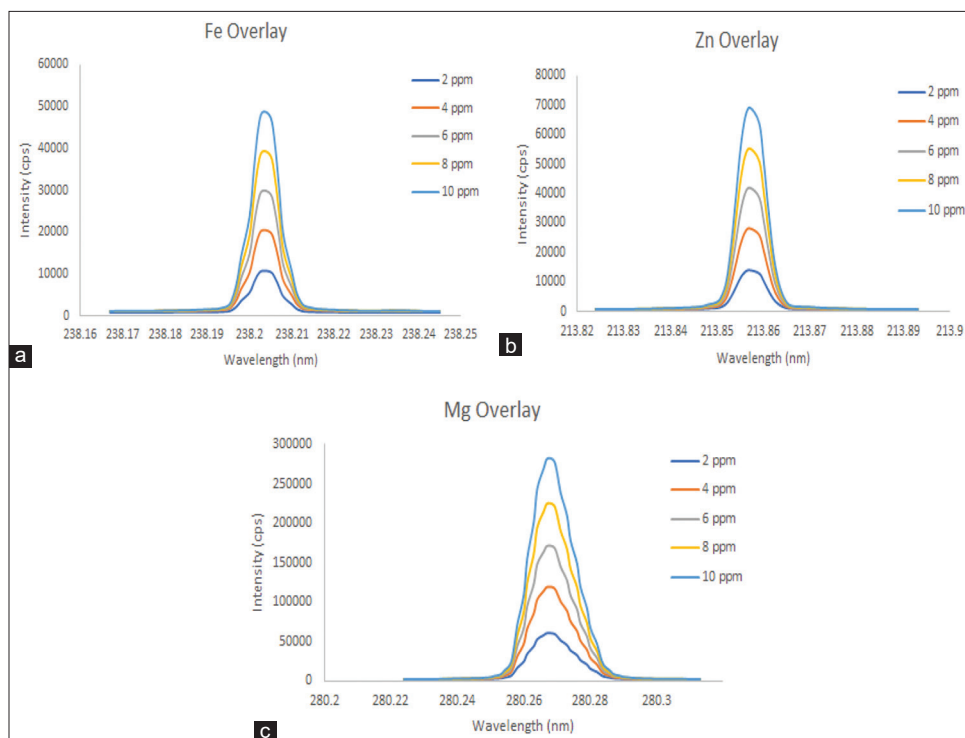


Fig. 8: Overlaid graphs of standard solutions. (a) Iron, (b) Zinc, and (c) Magnesium

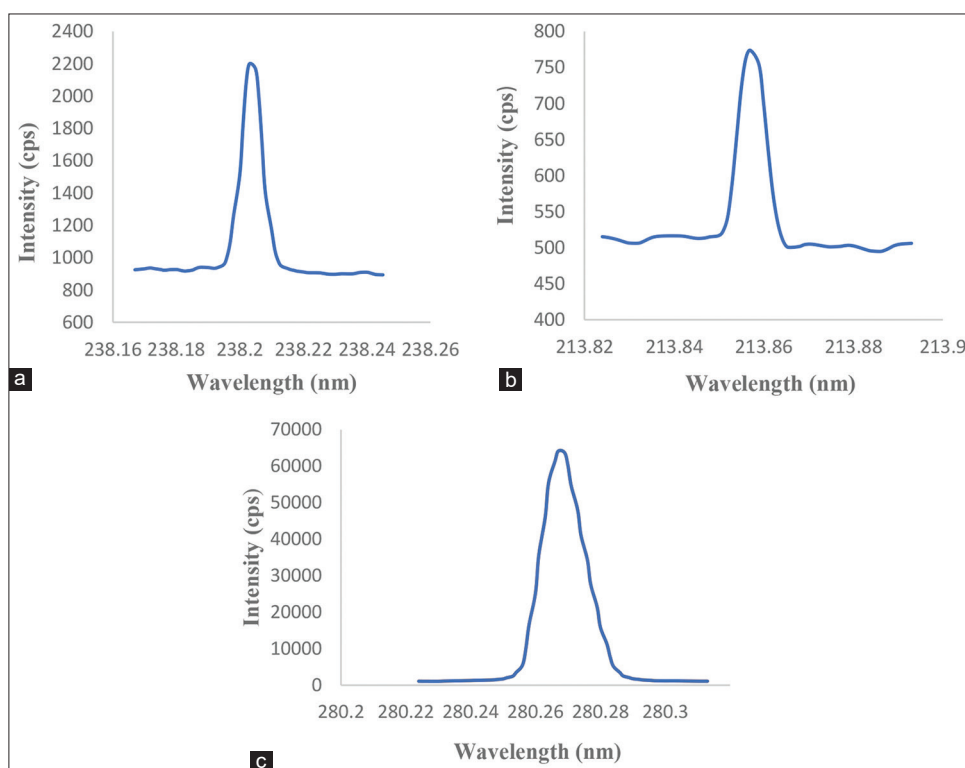


Fig. 9: Sample Graphs for Nannari Kanji powder sample. (a) Iron, (b) Zinc, and (c) Magnesium

Table 4: Estimation of carbohydrate by anthrone method

Sample concentration	Carbohydrate concentration (µg/mg)	Carbohydrate percentage	Sample concentration	Absorbance @660 nm
500µg	72.24	14.44%	500µg	0.148

Table 5: Estimations of protein by Lowry's method

Sample concentration	Protein concentration (µg/mg)	Protein percentage	Sample concentration	Absorbance @660nm
500 µg	134.15	26.83%	500 µg	0.087

Table 6: Estimation of fat content

Sample concentration	Fat yield	Fat percentage
3g	0.702g	23.4%

Table 7: Estimation of crude fiber

Sample concentration	Crude fiber yield	Crude fiber percentage
2g	0.208 g	10.4%

Concentration (µg/mL)	Percentage viability
200	59.41
400	59.31
600	46.59
800	38.19
1000	32.79

Table 8: MIC values of a sample

MIC (µg/mL)
IC ₅₀
527.02

children. Hence, it is important to know its nutritional values and the extent of its action. Nannari (*H. indicus*) is loaded with carbohydrates and Vitamin C. In Karunguruvai rice, carbohydrates and fibers were present in large amounts. Coconut milk is rich in fats and a moderate amount of carbohydrates. Nutritional analysis of *Nannari Kanji* revealed the presence of carbohydrates (14.44%) (Table 4), proteins (26.83%) (Table 5), fat content (23.4%) (Table 6), and crude fibers (10.4%) (Table 7).

From the analysis, it is clear that Nannari Kanji has more protein when compared with other nutrients. Kanji is often high in carbohydrates because rice is the primary source of carbohydrates [13]. However, in Nannari Kanji proteins were more abundant. Several animal studies have recommended that lack of protein induces pulmonary emphysema and impaired lung development. Furthermore, there are studies that show that protein intake is related to forced vital capacity and airflow obstruction in chronic obstructive pulmonary disease (COPD) patients. In fact, 25–40% of COPD patients are malnourished, which is associated with decreased lung function and exercise intolerance [14].

Antimicrobial activity was done in Nannari Kanji against *S. aureus*. *S. aureus* is a prevalent bacterium connected with a wide spectrum of illnesses involving the respiratory tract. It is frequently colonized in the skin or in the nose that leads to pulmonary infections [15]. The *in vitro* antimicrobial activity of *Nannari Kanji* showed that the MIC (IC₅₀) of the drug against the organism tested was 527.02 µg/mL (Table 8). Previous research on Nannari (*H. indicus*) revealed that the methanolic extract of *H. indicus* root has antimicrobial and free radical scavenging activity [16]. All three doshas, particularly kabam and pitham, are soothed by Nannari and Karunguruvai rice. Coconut milk is high in antioxidants, which protect the body from free radical damage [17].

Analysis of the minerals present in Nannari Kanji by the ICP-OES method showed the presence of magnesium (Mg), iron (Fe), and zinc (Zn). In which magnesium (Mg) was 1569.58 ppm, iron (Fe) was 192.06 ppm, zinc (Zn) was 25.36 ppm (Fig. 9 and Table 9). Standard

Table 9: Minerals level in Nannari Kanji powder

S.no	Elements	Nannari Kanji powder (parts per million)
1.	Iron (Fe)	192.06
2.	Zinc (Zn)	25.36
3.	Magnesium (Mg)	1569.58

Table 10: Standard linearity

S.no	Element (µg/g)	Wavelength	R ² value
1.	Iron (Fe)	238.20	1.00
2.	Zinc (Zn)	213.85	1.00
3.	Magnesium (Mg)	280.27	0.99

Linearity of the minerals were explained in Table 10. These minerals are analyzed because they are a proven source of antioxidants, have antimicrobial activity, and play an important role in the treatment of respiratory diseases. Nannari Kanji has more amount of magnesium (Mg) when compared with iron and zinc. From the previous studies, it is obvious that magnesium has bronchodilator activity and insufficient dietary magnesium intake can contribute to asthma and worse lung function in children which is proven through airway flow rates, airway hyper-reactivity, and increased risk of wheezing. Low magnesium consumption levels may lead to the development of asthma, with several research suggesting that magnesium may even protect against the development of asthma and chronic airway obstruction [18]. Magnesium deficiency may impair the activity of our white blood cells known as neutrophils, worsening asthma attacks [19].

Iron supplementation is associated with a considerable reduction in upper respiratory tract infection morbidity [20]. Iron oxide nanoparticles were tested against various bacteria (*Escherichia coli*, *Pneumonia*, *Streptococcus*, and *S. aureus*) utilizing nutrient broth and nutrient agar techniques and demonstrated considerable antibacterial activity [21]. Zinc insufficiency has been linked to an increased risk of respiratory tract morbidity. Zinc deficiency inhibits lymphocyte production, activation, maturation, disrupts intercellular communication, and reduces host defense [22].

CONCLUSION

According to the nutritional analysis, Nannari Kanji is high in protein and fiber when compared to carbohydrates. The antimicrobial activity of Nannari Kanji revealed that it is efficient in inhibiting *S. aureus*, the most common cause of upper respiratory tract illness. The elemental analysis showed the presence of magnesium (Mg) as a major element and other microelements. The presence of these minerals, as well as a higher protein content and antibacterial action, in Nannari Kanji, aids in the suppression of respiratory illnesses and protein deficiencies.

ACKNOWLEDGMENT

I wish to acknowledge my sincere thanks to Dr. R. Meenakumari, Director and Dr. S. Sudha Revathy, Assistant Professor, Department of Gunapadam, National Institute of Siddha, Chennai, for their continuous support throughout my study. I also wish to express my gratitude to Biozone Solutions, Pallavaram, Chennai, for their technical support.

AUTHOR'S CONTRIBUTIONS

Experimental design, guidance, and results interpretation were done by Dr. Sudha Revathy. Development, selection of the formulation, and

writing of this manuscript were done by Dr. S. Sowmya. The final review was done by Dr. Meenakumari.

CONFLICT OF INTEREST

The author declares no conflicts of interest.

AUTHORS FUNDING

There is no funding for this research paper.

REFERENCES

- Mary Suja R. Antioxidant potential and antibacterial activity of Siddha Chooranam prescribed to cure wound by the traditional siddha medicinal practitioner of Kanyakumari District, India. *Acta Sci Pharm Sci.* 2019 Dec;3(12):15-9.
- Sambasivam Pillai TV. Tamil-English Dictionary of Medicine, Chemistry, Botany and Allied Sciences, Based on Indian Medical Science. 2nd ed. India: Directorate of Indian Medicine and Homeopathy; 1991. p. 959.
- Dharshini Priya G, Bakkiya Devi M, Vennila K, Meenakshi Sundaram M. A review on nutritive porridge-panchamutti kanji for malnourished children (Ottasathukuraivu). *Int J Curr Res Biol Med.* 2019;4(11):25-8.
- Mohan RC. Brahmamuni Maruthuva Vilakam. 3rd ed. Chennai, Tamil Nadu: Thamarai Noolagam; 2004 Aug 04. p. 40, 41.
- GBD Chronic Respiratory Disease Collaborators. Prevalence and attributable health burden of chronic respiratory diseases, 1990-2017: A systematic analysis for the Global Burden of Disease Study 2017. *Lancet Respir Med.* 2020 Jun;8(6):585-96.
- Wikipedia Contributors. *Staphylococcus aureus*. Wikipedia, The Free Encyclopedia; 2024 Aug 17. Available from: https://en.wikipedia.org/w/index.php?title=Staphylococcus_aureus&oldid=1240737275 [Last accessed on 2024 Aug 19].
- Plummer DT. An Introduction to Practical Biochemistry. 3rd ed. United States: Mc Graw Hill; 1990. p. 179.
- Singh A. Estimation of Protein by Lowry's Method. Research Gate; 2016 Oct 05. Available from: https://www.researchgate.net/profile/arvind_singh56/post/which_is_the_economical_and_easy_method_to_estimate_protein_oil_and_sugar_content_in_maize_corn_seeds/attachment/59d63c1279197b8077999105/as/3a413819290570753%401475673615545/download/1.pdf [Last accessed on 2023 Oct 19].
- Sarmila KC. Determination of Crude Fat Analysis in Food samples. The Science Notes; 2023 Apr 17. Available from: <https://thesciencenotes.com/determination-crude-fat-content-food-sample> [Last accessed on 2023 Oct 19]
- Determination of Crude Fiber in Food Sample. The Science Notes; 2023 Apr 16. Available from: <https://thesciencenotes.com/determination-of-crude-fiber-in-food-sample/#:~:text=place%20the%20crucible%20filled%20with,fiber%20and%20note%20the%20weight> [Last accessed on 2023 Oct 19].
- Wiegand I, Hilpert K, Hancock RE. Agar and broth dilution methods to determine the minimal inhibitory concentration (MIC) of antimicrobial substances. *Nat Protoc.* 2008;3(2):163-75.
- Nayak B. Kanji 9: Surprising Health Benefits of the Fermented Rice Beverage. Health Benefits of Kanji; 2022 Mar 26. Available from: <https://www.drbrama.com/health-benefits-of-kanji>
- Bjarnadottir A. Oats 101: Nutrition Facts and Health Benefits Healthline; 2023 May 12. Available from: <https://www.healthline.com/nutrition/foods/oats> [Last accessed on 2023 Jul 13].
- Park S, Kim SW, Rhee CK, Kim K, Kim WJ, Yoo KH, et al. Effect of low protein intake on acute exacerbations in mild to moderate chronic obstructive pulmonary disease: Data from the 2007-2012 KNHANES. *J Thorac Dis.* 2021 Oct;13(10):5592-603.
- Parker D, Prince A. Immunopathogenesis of *Staphylococcus aureus* pulmonary infection. *Semin Immunopathol.* 2012 Mar;34(2):281-97.
- Rhitajit S, Sourav M, Bibhabasu H, Santanu B, Nripendranath M. Hemidesmus indicus, an age-old plant: Study of its *in vitro* antioxidant and free radical scavenging potentials. *Pharmacolonline.* 2009 Jan;1:604-17.
- Saif A, Aminah A, Muhamad S, Norrakiah AS, Zuhair A, Khalid Hamid M. Study of antioxidant activity and physicochemical properties of coconut milk (Pati santan) in Malaysia. *J Chem Pharm Res.* 2015 Jan;7(4):967-73.
- Britton J, Pavord I, Richards K, Wisniewski A, Knox A, Lewis S, et al. Dietary magnesium, lung function, wheezing, and airway hyperreactivity in a random adult population sample. *Lancet.* 1994 Aug 06;344(8919):357-62.
- Baker JC, Tunnicliffe WS, Duncanson RC, Ayres JG. Dietary antioxidants and magnesium in type 1 brittle asthma: A case control study. *Thorax.* 1999 Feb;54(2):115-8.
- De Silva A, Atukorala S, Weerasinghe I, Ahluwalia N. Iron supplementation improves iron status and reduces morbidity in children with or without upper respiratory tract infections: A randomized controlled study in Colombo, Sri Lanka. *Am J Clin Nutr.* 2003 Jan;77(1):234-41.
- Khashan KS, Sulaiman GM, Mahdi R. Preparation of iron oxide nanoparticles-decorated carbon nanotube using laser ablation in liquid and their antimicrobial activity. *Artif Cells Nanomed Biotechnol.* 2017 Dec;45(8):1699-709.
- Zinc Supplements Could Fight Respiratory Tract Infection Symptoms, Suggests Review. Nutrition Insight All News. Available from: <https://www.nutritioninsight.com/news/zinc-supplements-could-fight-respiratory-tract-infection-symptoms-suggests-review.html>