

## CLIMATE CHANGES AND ITS IMPACT ON FISH WITH REFERENCE TO ANTIBIOTIC RESISTANT ENTERIC BACTERIA AND HEAVY METAL ACCUMULATION: A HUMAN HEALTH

S.KULANDAIVEL<sup>1</sup>, K.SHAMEEM RANI<sup>2</sup>, V.SELVI<sup>3</sup>

<sup>1,3</sup>Assistant Professor, Department of Zoology and Microbiology, Thiagarajar college, Madurai. <sup>2</sup>Associate Professor, Department of Zoology, M.S.S.Wakf Board College, Madurai

Email: microskv@yahoo.com

Received: 13 November 2013, Revised and Accepted: 2 December 2013

### ABSTRACT

Fresh fish (*Mugil cephalus*) is a very important source of protein to the population in our country. This fish may harbor *Salmonella sp.* It may be a source of pathogen to human being. A total of 20 samples (20 muscles and 20 gills) were analyzed. The isolates were exposed to 5 different antibiotics. Most of the isolated were resistances to at least one of the antibiotic. This is a clear indication that sewage effluent causes contamination of marine wildlife. Investigation on the accumulation of heavy metals (cadmium, copper and chromium) was carried out commercially important fish (*Mugil cephalus*). The accumulation was observed in tissues of muscles and gills. The result revealed that the copper and cadmium concentration were highest in the muscle and gills. In the muscle and gill of *Mugil cephalus* the order of accumulation was Copper>Cadmium>Chromium.

**Keywords:** *Salmonella sp.*, Heavy metals, Fish, Muscles and Gills

### INTRODUCTION

Today, humankind's activities are altering the world's climate. We are increasing the atmospheric concentration of energy-trapping gases, thereby amplifying the natural "greenhouse effect" that makes the Earth habitable. These greenhouse gases (GHGs) comprise, principally, carbon dioxide (mostly from fossil fuel combustion and forest burning), plus other heat-trapping gases such as methane (from irrigated agriculture, animal husbandry and oil extraction), nitrous oxide and various human-made halocarbons. Change in world climate would influence the functioning of many ecosystems and their member species. The majority of 1.3 billion annual cases of *Salmonella* – caused human gastroenteritis result from ingestion of contaminated food products such as undercooked beef, pork, eggs, milk, shell fish and fish (pang *et al.*,1995),(Gomez *et al.*,1997),(Esaki *et al.*, 2004). *Salmonella* infections can also be contracted following consumption of fresh fruits or vegetables contaminated by fertilizer. Birds and flies are important vectors for rapid widespread dissemination of *Salmonella* in the environment (Davies and Wray,1996).*Salmonella* withstands a wider variety of stresses associated with environmental fluctuations and may persist in water environment for some time. *Salmonella* can be disseminated as a result of water currents, underground springs and rain run off carrying contaminated material (Chao *et al.*, 1987),(Abdelmonem and Dowider,1990).

Like *E.coli*, *Salmonella* is constantly released into environment from infected human, farm animals, pets and wildlife (Baudart *et al* 2000). Pathogenic and potentially pathogenic bacteria associated with fish and shell fish include *Mycobacteria*, *Streptococcus iniae*, *vibrio vulnificus*, *vibro spp*, *Aeromonads*, *Salmonella spp*, *Shigella* and the others (Lipp and Rose 1997),(Zlotkin *et al* 1989),(Bhaftopadhyay,2003). Human infections by these fish pathogen are usually through contact with infected fish while handling them, water or other constituents of fish life environment (Acha and Szyfres,2003). The initial microflora on the surface of fish is directly related to the water environment while the flora in the gastrointestinal tract corresponds to the type of food and condition of fish (Liton,1980).

Municipal untreated sewage, run off and storm water are the most important immediate microbiological pollutants (Kayambo and Sven,2006). The low standard of health in the gulf of mannar region

is caused by a general lack of awareness of good hygiene practices, direct contamination of beach waters through bathing and washing and uncontrolled waste disposal around the shoreline. Other sectors like wildlife, agriculture, forestry, urban and rural settlements have been implicated to contribute to microbiological pollution. These activities increase eutrophication process thus creating a vast conducive environment for the survival of microbes which eventually infect fish.

Analysis of fish tissue slurry indicated that fish harvested from landing beaches along gulf are infested with; *Salmonella*, *Shigella* and *E. coli* (Onyango *et al.*, 2008b). Given the prevalence of water and food borne disease; Salmonellosis in marine fishes, it was important that all possible infection routes of the pathogens be investigated and prevention measures recommended. Fishes are major part of the human diet and it is therefore not surprising that numerous studies have been carried out on metal pollution in different species of edible fish. Predominantly, fish toxicological and environmental studies have prompted interest in the determination of toxic elements in seafood

This study aimed to isolate and characterize *Salmonella* from marine water and fish muscle and Gills and to determine the concentrations of heavy metals cadmium, chromium and copper in fish muscle, collected from Rameswaram and Tuticorin. It is expected that the results of this research will assist in acquiring information about the level of toxic metals in this region.

### MATERIALS AND METHODS

#### 1.Collection of sample

Marine fish samples (*Mugil cephalus*) were obtained from markets located in two different cities (Rameswaran and Tuticorin). The samples were obtained in the month (batch wise) of January-March-I, April-June-II, July-September-III, October -December-IV. An average of 5 fishes was bought and transported to laboratory in plastic container within 4 hours. Then marine water samples also were collected in the same area.

## 2. Sample processing for microbial analysis

With gloved hands and sterilized knife, the fish was severed into parts ( Gill and whole body). 20 grams of each part was grinded with 225ml Buffered Peptone Water (BPW) for 3min. pellet were obtained by centrifugation at 20°C, 10,000 x g RPM, for 15minutes for fish sample. The pellet was then dissolved into 10ml of BPW.

The inoculums were later streaked onto *salmonella shigella* Agar (SSA Difco), Xylose-Lysine Deoxycholate (XLD Difco) and Bismuth sulfite Agar (BSA – Difco) and were incubated at 37°C for 48hrs. In SSA *Salmonella spp.* were seen as white or yellow with black spot centrally, in XLD, *Salmonella spp.* grew as pink color with black centre while in BSA salmonella colony grew as grey black with metallic sheen color.

## 3. Antimicrobial sensitivity test

The agar diffusion method according to Kirby Bauer guidelines was applied for antimicrobial susceptibility testing of *Salmonella* isolates. Mueller Hinton Agar was used in order to perform this test. Suspension of 0.5ml density was used for inoculation. Total of eight isolates from Rameswaram and tuticorin fishes were tested for antimicrobial susceptibility. The following antimicrobial agents were used: Amoxycillin, Tetracycline, Penicillin, Streptomycin and Chloramphenicol. The results were tabulated.

## 4. Quantitative analysis of heavy metals

### Sample preparation for heavy metal analysis

About 20.0 g of fresh fish samples were weighed accurately and homogenized then poured in a iodine flask separately, 25 ml of concentrated HNO<sub>3</sub> was added into each flask. The iodine flasks were refluxed for 1 hr. at 95°C ± 5°C. The sample solutions were cooled and 10 ml of Concentrated HNO<sub>3</sub> was added into each flask. The flasks were again were refluxed for about 1 hr. at 95°C ± 5°C. Repeated the process until the digestion was completed. Evaporated the solution to 5 ml. Solutions were cooled and 10 ml of Concentrated HCl was added into each flask. Keep the solutions for refluxed for about 15 minutes to remove the nitrous fumes. Cooled the digested sample solutions, 20 ml of HPLC grade water was added into each flask. Filtered the digested solution through Whatman filter paper no. 41 into 50 ml volumetric flask and made upto the volume using HPLC grade water. Recovery study was carried out by fortifying known concentration of standards into pre analyzed sample.

To determine the metals (cadmium, chromium and copper) concentration in the samples, a atomic absorption spectrometer (AAS) was used. All chemical reagents were from analytical reagent grade (Merck). All solutions were prepared in deionized water. Calibration standards of each heavy metal were prepared by appropriate dilution of the stock solutions (1000 ppm, Merck). The glassware and plastic containers were acid washed with nitric acid 10% for 24 h and rinsed with double distilled water before use.

## RESULT AND DISCUSSION

The method of isolation and media used contributed to the effect of *Salmonella sp* significance. This proves that different media produce different results and performance. The result obtained of the gills and whole body fish differ because of the sensitivity of different media that was used. From this study, SSA media was more sensitive than BSA (Photo 1). *Salmonella spp.* was present in all parts of the fish especially the whole body, gills and marine water represented in Table 1 & 3. In the above study, SSA gave more bacterial isolates than the other two XLD and BSA. Dutch *et al.*, (1995) reported that the sensitivity of SSA and BSA were 76.6% and 50.0% respectively. (Michael *et al.*, 2003) showed that SSA presented better conditions for isolation of *salmonella sp.* colonies, hence eliminating the volume of false positives.

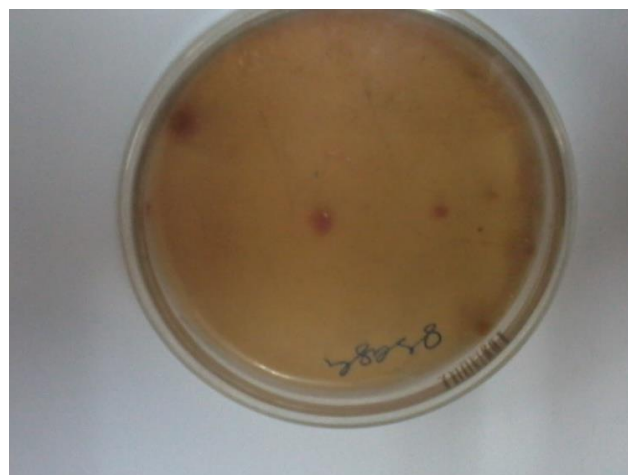


Plate 1: Isolation of *Salmonella sp* from fish by using SS agar medium

Table 1. The number of salmonella sp present in marine water sample.

Water sample	No. of CFU/mL
R1	11 X10 <sup>2</sup>
R2	29 X10 <sup>1</sup>
R3	15 X10 <sup>1</sup>
R4	12 X10 <sup>1</sup>
T1	21 X10 <sup>1</sup>
T2	19 X10 <sup>1</sup>
T3	5 X10 <sup>1</sup>
T4	9 X10 <sup>1</sup>

R1,R2,R3,R4—Rameswaram water sample, T1,T2,T3,T4---Tuticorin water sample

Table 3: The number of *Salmonella* bacteria present in marine fish sample

Sample month/ Number	Rameswaram		Tutucorin	
	Muscle	Gills	Muscle	Gills
Jan-Mar-I	3.0 X10 <sup>2</sup>	2.8 X10 <sup>3</sup>	4.6 X10 <sup>2</sup>	7.2 X10 <sup>3</sup>
Apr-Jun-II	2.5 X10 <sup>2</sup>	3.1 X10 <sup>2</sup>	5.0 X10 <sup>2</sup>	6.4 X10 <sup>3</sup>
Jul-Sep-III	2.0 X10 <sup>2</sup>	3.6 X10 <sup>2</sup>	5.2 X10 <sup>2</sup>	5.9 X10 <sup>3</sup>
Oct-Dec-IV	2.8 X10 <sup>2</sup>	4.3 X10 <sup>2</sup>	4.0 X10 <sup>2</sup>	6.0 X10 <sup>3</sup>

As a result, the better selectivity of the media is responsible for the greater detection of *Salmonella sp*: majorly when streaked from a selective enrichment that eliminates overgrowth of competitors the method of isolation was largely responsible for the significant difference on *Salmonella sp*. From this study, *Salmonella sp.* was found to contaminate different parts of the body. This was supported by the finding (Haltha *et al.*, 1997). That these bacteria would exist on fish's skin, gills and intestine and the most potential reservoir of *salmonella spp.* was the intestine. Hence, it is highly recommended that cross - contamination of other tissue notably digestive tract during handling or preparation be avoided. This is important for future study in order to know the route of salmonella species transmission from pond to the next food chain supply. The study showed that salmonella was more on the gills than whole body of fish. *Salmonella shigella agar* proved to be a better selective media than the other two media.

Determinations of *Salmonellae* by specific media (SSA) in water sample were detected. The highest numbers during one year (January 2012- December 2012) was 11 x 10<sup>2</sup> in Rameswaram in table 1. The highest *Salmonella sp* was detected in muscle and gills of

Rameswaram fishes  $3.0 \times 10^2$  and  $4.3 \times 10^2$  respectively. The maximum number of *Salmonella* sp occurred in Tuticorin fish muscle and gills region were  $5.2 \times 10^2$  and  $7.2 \times 10^3$  respectively. From this result we concluded that the density of *Salmonellae* sp the minimum value was recorded in month of January to march (Table 3). Similar results were obtained by Hunter and McDonald number was significantly higher in STE and polluted (1991), Tian et al. (2002) and Hyland et al. (2003) who stated that seawater over unpolluted. *Enterobacteriaceae* were the faecal indicator bacteria populations normally peak in isolated from gills, skin, and muscles.

In our study, the isolated *Salmonella* sp are more sensitivity to Streptomycin, Amoxycillin and Pencillin. But highly resistant pattern was observed in Chloramphenicol and Tetracycline drugs (Table 2, 4, 5 and photo 2). Antimicrobial agents and their metabolites entering the aquatic environment become highly diluted and therefore detection of these compounds becomes extremely difficult (Kümmerer, 2009). Overuse of antibiotics has led to the emergence of resistant bacteria and consequently caused an imbalance between susceptible and resistant bacteria. This eventually has sub-grouped them into susceptible and resistant variants (Levy, 1994). In addition, the potent killing and growth inhibition of bacteria have increased the number of resistant strains which have ultimately evolved into prominent populations of the microbial flora (Levy, 1992).

**Table 2: Antibiotic sensitivity (mm) patterns of *Salmonella* spp. isolated from water sample**

Antibiotic Compound	R 1	R2	R3	R 4	T1	T 2	T3	T4
Amoxycillin	5.0	-	5.0	6.1	12.0	5.0	8.2	-
Pencilline	7.4	15.2	11.2	-	-	-	-	-
Tetracycline	-	12.4	8.4	12.2	10.2	-	10.8	8.4
Streptomycin	-	10.2	7.2	9.4	-	9.5	-	12.8
Chloramphenicol	5.2	-	8.4	-	-	-	-	7.6

**Table 4: Antibiotic sensitivity (mm) patterns of *Salmonella* spp. Isolated from Rameswaram fish (Muscle and gills) sample**

Antibiotic Compound	Rm1	Rm2	Rm3	Rm4
Amoxycillin	-	8.5	8.0	-
Pencilline	10	-	-	8.4
Tetracycline	8.3	6.5	-	5.3
Streptomycin	9.0	4.8	-	8.0
Chloramphenicol	8.0	-	6.5	-

Rm1,Rm2,Rm3,Rm4— Fish muscle of Rameswaram,  
1,RG2,RG3,RG4,----Fish gills of Rameswaram

**Table 5: Antibiotic sensitivity (mm) patterns of *Salmonella* sp isolated from Tuticorin fish (Muscle and gills) sample**

Antibiotic Compound	Tm1	Tm2	Tm3	Tm4
Amoxycillin	-	-	-	6.7
Pencilline	6.9	-	4.0	7.3
Tetracycline	7.8	-	10.0	-
Streptomycin	12.5	8.5	-	9.3
Chloramphenicol	-	-	-	12.6

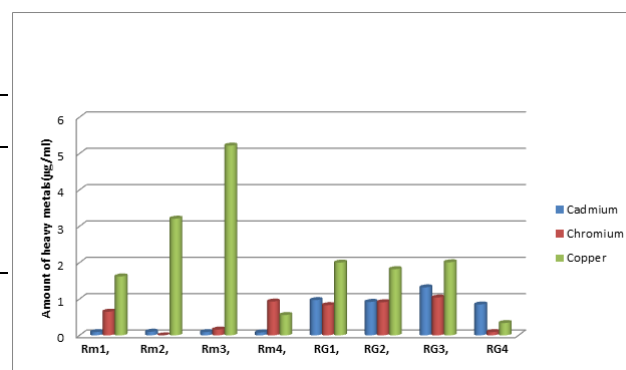
Tm,Tm2,Tm3,Tm4---Fish muscle of Tuticorine, TG1,TG2,TG3,TG4---  
Fish gills of Tuticorine

**Photo 2: Antibiotic sensitivity (mm) patterns of *Salmonella* sp isolated from fish (Muscle and gills) sample**

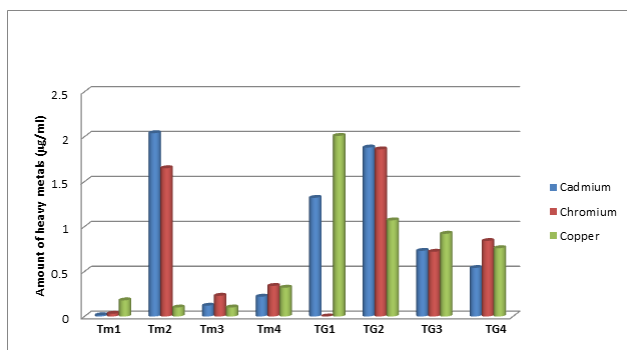


Hence, the presence of antibiotic resistant bacteria have been used as bio-indicators of polluted effluents since resistant bacteria can be easily isolated and detected (Al-Bahry et al., 2009). Based on the present results, the coastal area of Gulf of Mannar and Tuticorin its fish are continuously exposed to contaminated discharge. Various types of plastics ,bottles, waste clothes, papers, rusted materials and wasted or unused pharmaceutical compounds were dumped at the area of Gulf of mannar through the ship from other countries (Srilanka, Malaysia and Meyanmar).The microbes of human origin are affecting the marine environment and antibiotic resistant determinants are being transferred to other bacteria in the area. Further studies on the effects of sewage discharge and human contamination and bacterial contamination on the environment and public health are urgently needed in different regions of Indian coastal.

The results of heavy metals in fish sample from Rameswaram and Tuticorin are presented in Figure 1 and 2. The concentration of cadmium was found to be higher in fish gills (1.32µg/g) least in the muscles (0.09µg/g). Chromium had an overall mean value of (1.04 µg/g) in the fish parts. Copper also had its highest value (5.22µg/g) in muscles at Rm3. It however had its lowest concentration in the fish gills (0.09µg/g) followed by in the fish muscles (0.13µg/g). It was generally observed that amongst the fish parts, gills have the highest concentration of heavy metals while the muscles had the lowest concentrations. Heavy metals entering the fish have a possibility to get accumulated in different parts of the body and the residual amount can build up to a toxic level. The fish, *Mugil cephalus* is economically important and they form a large part of the fish catch in the study area.



**Figure 1: Heavy metal concentration in muscles and gills region of Rameswaram fish**



**Figure 2: Heavy metal concentration in muscles and gills region of Tuticorin fish**

Metal elimination routes are more than uptake routes, however metal accumulation is more rapid than metal elimination probably due to the presence of metal binding proteins in tissues (Kendrick *et al.*, 1992). The accumulation of the metals in liver could be based on the greater tendency of the elements to react with the oxygen, carboxylate, amino group, nitrogen or sulphur of the mercapto group in the metallothionein protein, which was at highest concentration in the liver (Kendrick *et al.*, 1992). These complexes are slowly redistributed to the renal cortex. Liver has also an important role in contaminant storage, redistribution, detoxification or transformation and also serve as an active site of pathological effects induced by contaminants (El-Shahawi, 1996). This study revealed that metal accumulation in gills occurs in higher magnitude than what appeared in the muscle. This is a common finding that is also reported by several investigations (Usero *et al.*, 2003; Dural *et al.*, 2007; Al-Yousuf *et al.*, 2000). Because of the presence of high levels of metallothionein protein, liver tissue acts as a target organ for heavy metal detoxification [Yilmaz, 2003; Kraemer *et al.*, 2006; Canli and Atli, 2003; Al-Yousuf *et al.*, 2000; Romeo *et al.*, 1999]. Gills act as the main site for entry of different kinds of contaminants such as heavy metals due to its continuous contact with the external medium. This organ serve a variety of physiological functions such as respiratory gas exchange, osmoregulation and nitrogen excretion (Hoar and Randall, 1984; Altindag and Yigit, 2005). Therefore, heavy metals may appear in a high level in liver and gill tissues compared to what occurs in muscle. Muscle tissue has lower tendency to accumulate heavy metals (Huang, 2003, Al-Saleh, and Shinwari, 2002, Altindag, and Yigit, 2005, Aucoin *et al.*, 1996). Altindag and Yigit, (2005), Romeo *et al.*, (1999) and Huang, (2003) found higher concentration of heavy metals in liver and gill than in muscle.

## CONCLUSION

In the present study, the microbes of human origin are affecting the marine environment and antibiotic resistant determinants are being transferred to other bacteria and human being. Immunosuppressive person and old age people are easily affect the salmonellosis diseases. In our study, provides new information on the concentration of heavy metals in the fish from Rameswaram and Tuticorin Harbor Area. Heavy metal concentrations in coastal waters as well as fish tissues have been found variable. The public health implication of the research seems to show no possibility of acute toxicity of heavy metals (Cu, Cd, Cr,) of edible fishes consumed. Nonetheless, continuous monitoring of biodata in these areas should continue while government should enforce existing pollution control laws, so that the metal concentrations do not get to critical levels but the fish adopted to that metal concentration then it will accumulate more metals in body that will threaten human health.

## REFERENCES

- Pang, J; Z.A. Bhutta, B. B. Finlay, M. Altwegg, "Typhoid, fever and other Salmonellosis: a continuity challenge" Trends microbial vol 3, pp 253-255, 1995.
- Gomez, T.M, Y. Motrjemi, S. Miyagawa, F.K. Kaferstein, K. Stohr, "Foodborne Salmonellosis" World Health Stat. Q.; vol 50, pp 81-9, 1997.

- Esaki, H; A. Morioka, K. Ishihara, "Antimicrobial susceptibility of Salmonella isolated from cattle, swine, and poultry (2001 - 2002): Report from the Japanese Veterinary Antimicrobial Resistance Monitoring Program", Antimicrob. Chemother vol 53, pp 266-70, 2004.
- Davies, R.H; C. Wray, "Seasonal variations in the isolation of Salmonella typhimurium, Salmonella enteritidis, Bacillus aureus and Clostridium perfringens from environmental samples", J. vet. Med. Ser. vol 43, pp. 119-127, 1996.
- Chao, W; R. Ding, R. Chen, "Survival of pathogenic bacteria in environmental microcosms", Chinese J. Microbial Immun. Vol. 20, pp. 339-348, 1987.
- Abdel-Monem, M.H; A.A. Dowidar, "Recoveries of Salmonella from soil in Eastern region of Saudi Arabia Kingdom", J. Egypt. Public Health Assoc. vol, 65, pp. 61-75, 1990.
- Baudart, J; K. Lemarchand, A. Brisabois, P. Lebaron, "Diversity of Salmonella strains isolated from the aquatic environment as determined by serotyping and amplification of ribosomal DNA spacer regions", Appl. Environ. Microbiol.; vol. 66, NO. 4, pp. 1544-1552, 2000.
- Lipp, E.K; J.B. Rose, "The role of sea food in foodborne diseases in the United States of America," Rev. Sci. Tech. OIE, vol. 16, pp. 620-640, 1997.
- Zlotkin, A; A. Eldar, C. Ghifino, H. Bercovier, "Identification of Lactococcus garvieae by PCR," J. Clin. Microbiol., vol. 36 pp. 983-985, 1999.
- Bhaftopadhyay, P. "Fish - catching and handling," In: Robinson R.K. (ed.): Encyclopedia of Food Microbiology, Academic Press, London, vol. 2, pp. 1547, 2000.
- Acha, P.N; B. Szyfres, "Zoonoses and communicable diseases common to man and animals," Bacterioses and mycoses. 3rd ed. Scientific and Technical Publication, vol. 1, No. 580, Pan American Health Organization, Regional Office of the WHO, Washington, USA.; ISBN 92 75 31580 9. pp. 384, 2003.
- Liston, J. "Microbiology in fishery science", In Connell, J.J. (ed). Advances in Fish Science and Technology; Jubilee Conference of Torry Research Oxford: Fishing News Books Ltd, Farnham, UK, 1980.
- Kayambo, S; E.J. Sven, "Lake Victoria. Experience and lessons learnt. A case Study for Preliminary Risk Assessment Report," pp. 431 - 446, 2006.
- Onyango, D; S. Wandili, R. Kakai, E.N. Waindi, Isolation of Salmonella and Shigella from fish harvested along Winam Gulf of lake Victoria, Kenya, J. infect. Dis. In Developing Countries, Vol. 2, pp. 106-111, 2008b.
- Dutch, H and Altwegg M (1995). Evaluation of Five New Plating Media for Isolation of Salmonella species. Journal Clinical Microbiol. 33: 802 - 304.
- Michael, G; Simoneti, R; de Costa, M and Cardoso, M (2003). Comparison of Different Selective Enrichment Steps to Isolate Salmonella Sp. from Feces of Finishing Swine Brazil Journal Microbiology. 34: 138 - 142.
- Haltha, A and Lakshmanaperumalsamy M (1997). Prevalence of Salmonella in fish and crustaceans from markets in Coimbatore, South India, Food Microbiology 14: 111-116.
- Hunter, C. and A. Mac Donald, 1991. Seasonal market in Khartoum state. J. Bacteriology Res., 1: changes in the sanitary bacterial quality of water 085-088. draining a small upland catchments in the Yorkshire.
- Tian, Y.Q., P. Gong, D. Radke and J. Scarborough, DNA probe by colony hybridization using non-2002. Spatial and temporal modeling of microbial isotopic and isotopic labeling. APMIS, 100: 623-628. contaminants on grazing farmlands. J. Environ. Qual.
- Hyland, R., J. Byrne, B. Selinger, T. Graham, chain reaction assay for the detection of Salmonella J. Thomas, I. Townshend and V. Gannon, 2003. bacteria species within the oldman river basin of South. European Journal of

- Clinical Microbiology Spatial and temporal distribution of faecal indicator and Infectious Dis., 15: 603-607.
21. Kümmerer, K., 2009. Antibiotics in the aquatic environment. A review. Part II. chemosphere 75, 435-441.
  22. Levy, S.B., 1994. Balancing the drug resistance equation. Trends Microbiol. 2, 41- 342.
  23. Levy, S.B., 1992. The Antibiotics Paradox: How Miracle Drugs are Destroying the Miracle. Plenum, New York.
  24. Al-Bahry, S.N., Mahmoud, I.Y., Elshafie, A.E., Al-Harthy, A., Al-Ghafri, S., Al-Amri, I., Alkindi, A.Y., 2009. Bacterial flora and antibiotic resistance from eggs of green turtles *Chelonia mydas*: an indication of polluted effluents. Mar. Pollut. Bull. 58, 720-725.
  25. Kendrick, M.H., M.T. May, M.J. Plishka and K.D. Robinson: Metals in Biological Systems. Ellis Horwood Ltd., England (1992).
  26. El-Shahawi, M.S.: Spectroscopic and electrochemical studies of chromium III complexes with some naturally occurring ligands containing sulphur. Spectrochim. Acta, 52, 139-148 (1996).
  27. Usero, J; C. Izquierdo, J. Morillo, and I. Gracia, "Heavy metals in fish (*Solea vulgaris*, *Anguilla anguilla* and *Liza aurata*) from salt marshes on the southern Atlantic coast of Spain," *Environment International*. 2003, 29: 949- 956.
  28. Dural, M; M. Ziya Lugal Goksu, and A.A. Ozak, "Investigation of heavy metal levels in economically important fish species captured from the Tuzla lagoon," *Food Chemistry*. 2007, 102: 415-421.
  29. Al-Yousuf, M.H; M.S. El-Shahawi, and S.M. Al-Ghais, "Trace metals in liver, skin and muscle of *Lethrinus lentjan* fish species in relation to body length and sex," *The Science of the Total Environment*. 2000, 256: 87-94.
  30. Yilmaz, A.B. "Levels of heavy metals (Fe, Cu, Ni, Cr, Pb and Zn) in tissue of *Mugil cephalus* and *Trachurus mediterraneus* from Iskenderun Bay, Turkey," *Environmental Research*. 2003, 92: 277-281.
  31. Kraemer, L.D; P.G.C. Campbell, and L. Hare, "Seasonal variations in hepatic Cd and Cu concentrations and in the sub-cellular distribution of these metals in juvenile yellow perch (*Perca flavescens*)," *Environmental Pollution*. 2006, 142: 313-325.
  32. Canli, M. and G.z. Atli, "The relationships between heavy metal (Cd, Cr, Cu, Fe, Pb, Zn) levels and the size of six Mediterranean fish species," *Environmental Pollution*. 2003, 121: 129-136.
  33. Romeo, M; Y. Siau, Z. Sidoumou, and M. Gnassia-Barelli, "Heavy metal distribution in different fish species from the Mauritania coast," *The Science of the total Environment*. 1999, 232: 169-175.
  34. Hoar, W.S; and D. J. Randall, *Fish Physiology*. Vol. X. Gills. Part A. Anatomy, Gas Transfer, and Acid-Base Regulation. Academic Press, 1984, Orlando, FL.
  35. Altindag, A; and S. Yigit, "Assessment of heavy metal concentrations in the food web of lake Beysehir, Turkey," *Chemospher*. 2005, 60: 552-556.
  36. Huang, W.B. "Heavy metal concentrations in the common benthic fishes caught from the coastal waters of Eastern Taiwan," *Journal of Food and Drug Analysis*. 2003, 11 (4): 324-330.
  37. Al-Saleh, I. and N. Shinwari, "Preliminary report on the levels of elements in four fish species from the Arabian Gulf of Saudi Arabia," *Chemosphere*. 2002, 48: 749-755.
  38. Aucoin, J; R. Blanchard, C. Billiot, C. Partridge, D. Schultz, and K. Mandhare, "Trace Metals in Fish and Sediments from Lake Boeuf, Southeastern Louisiana," *Microchemical Journal*. 1999, 62: 299-307.