

## ABSORBANCE RATIO SPECTROPHOTOMETRIC METHOD FOR THE SIMULTANEOUS ESTIMATION OF DEXAMETHASONE SODIUM PHOSPHATE AND ATROPINE SULPHATE IN EYE DROP

HIRAL M. POKIYA<sup>1\*</sup>, HASUMATI A. RAJ<sup>1</sup>, VINEET C. JAIN<sup>1</sup>

<sup>1</sup>Shree Dhanvantary College of pharmacy, Kim, Surat, Gujarat, India. Email: pokiyahirall@yahoo.in

Received:26 April 2014, Revised and Accepted:10 May 2014

### ABSTRACT

A simple, sensitive, rapid, accurate, precise Absorbance Ratio Method was developed for the simultaneous determination of Dexamethasone Sodium Phosphate and Atropine Sulphate in combined dosage form. Absorbance ratio method uses the ratio of absorbance at two selected wavelengths, one which is an iso absorptive point and other being the  $\lambda_{\max}$  of one of the two components. Dexamethasone Sodium Phosphate and Atropine Sulphate show an iso absorptive point at 228.60 nm in methanol. The second wavelength used is 239.60 nm, which is the  $\lambda_{\max}$  of Dexamethasone Sodium Phosphate in methanol. The linearity was obtained in the concentration range of 20-60  $\mu\text{g/ml}$  for Atropine Sulphate ( $r^2=0.9991$ ) and 2-6  $\mu\text{g/ml}$  for Dexamethasone Sodium Phosphate ( $r^2=0.9994$ ). LOD is 0.063 and 3.01  $\mu\text{g/ml}$  for Dexamethasone Sodium Phosphate and Atropine Sulphate respectively. LOQ is 0.19 and 9.12  $\mu\text{g/ml}$  for Dexamethasone Sodium Phosphate and Atropine Sulphate respectively. The concentrations of the drugs were determined by using ratio of absorbance at iso absorptive point and at the  $\lambda_{\max}$  of Dexamethasone Sodium Phosphate. The method was successfully applied to pharmaceutical dosage form because no interference from the excipients was found. The results of analysis have been validated.

**Keywords:** Dexamethasone Sodium Phosphate, Atropine Sulphate, Absorbance ratio method, Iso absorptive point.

### INTRODUCTION

Atropine is a naturally occurring tropane alkaloid and basic in nature. It is an anticholinergic or parasympatholytic drug. It inhibits the muscarinic actions of acetylcholine [1]. Atropine Sulphate is chemically [Bis[(1R,3R,5S)-8-methyl-8-azabicyclo [3,2,1]oct-3-yl(2RS)-3-hydroxy-2-phenylpropanoate] sulphate] and in Indian, British, United States, European Pharmacopoeia [2-5]. In literature, several analytical methods such as Uv-Visible spectroscopy [6-8], HPLC [9-15] and UPLC [16] have been reported for the determination of Atropine Sulphate single and in combination with other drugs in its pharmaceutical formulation.

Dexamethasone Sodium Phosphate is a glucocorticoid and suppresses normal immune response [1]. Chemically 9-Fluoro-11 $\beta$ , 17-dihydroxy-16 $\alpha$ -methyl-3, 20-dioxopregna-1,4-dien-21-yl disodium phosphate and Dexamethasone Sodium Phosphate official in Indian, British, European and United States Pharmacopoeia [2-5]. In literature, several analytical methods such as Uv-Visible spectroscopy [17-22], polarographic [23], HPLC [24-36] and HPTLC [37-38] have been reported for the determination of Dexamethasone Sodium Phosphate single and in combination with other drugs in its pharmaceutical formulation.

The combination of these two drugs is not official in any pharmacopoeia; hence no official method is available for the simultaneous estimation of Dexamethasone Sodium Phosphate and Atropine Sulphate in their combined dosage forms. Literature survey does not reveal any simple spectrophotometric method for the simultaneous determination of Atropine Sulphate and Dexamethasone Sodium Phosphate in combined dosage form.

Therefore, an objective of this work is to develop spectrophotometric method based on Q-absorbance ratio spectrophotometric method for the simultaneous determination of both these drugs in their combined dosage form. The second objective is to validate the method as per the ICH guidelines.

The chemical structures of both drugs are as shown in Figure 1 and 2.

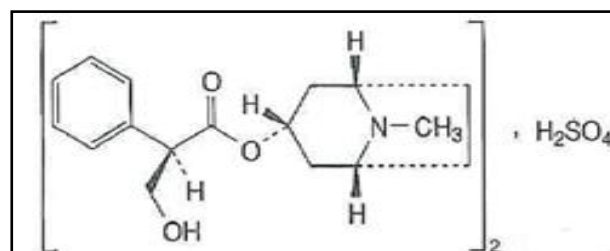


Fig.1: Structure of Atropine Sulphate

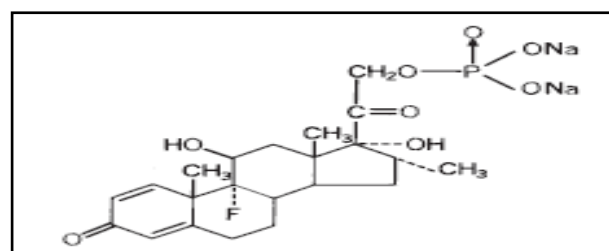


Fig.2: Structure of Dexamethasone Sodium Phosphate

### MATERIALS & METHODS

#### Materials

Spectroscopic Analysis was carried out on a UV/VISIBLE 2450 (Shimadzu) double beam UV-Visible spectrophotometer with software of UV Probe version 2.34. The zero order absorption spectra were recorded over the wavelength range of 200-400 nm, against solvent blank, in quartz cuvettes with 1 cm diameter. A Semi micro analytical balance (Sartorius CD2250, Germany) was used for weighing purpose. Atropine Sulphate obtained as gift samples from Yarrow Chem. Products Mumbai-India and Dexamethasone Sodium Phosphate from Enzal Chemicals (I) Ltd. Panoli. The commercial fixed dose combination product was procured from the local market.

Methanol(Rankem).

**Methods**

**Preparation of Standard Solutions**

A 10 mg of standard Dexamethasone Sodium Phosphate and Atropine Sulphate were weighed and transferred to 100 ml separate volumetric flasks and dissolved in methanol. The flasks were shaken and volumes were made up to mark with methanol to give a solution containing 100µg/ml each of Dexamethasone Sodium Phosphate and Atropine Sulphate.

**Methodology**

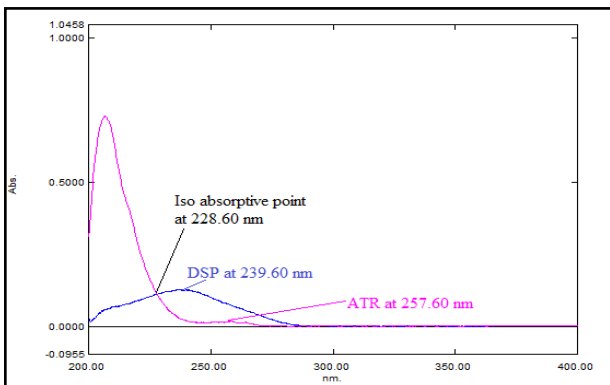
Absorbance ratio method uses the ratio of absorbance at two selected wavelengths, one which is an iso absorptive point and other being the λ<sub>max</sub> of one of the two components. From the overlay spectra of two drugs, it is evident that DSP and ATR show an iso absorptive point at 228.60 nm. The second wavelength used is 239.60 nm, which is the λ<sub>max</sub> of DSP (Figure 3). Working standard solutions having concentration 2,3,4,5 and 6 µg/ml for DSP and 20,30,40,50,and 60 µg/ml for ATR were prepared in methanol and the absorbance at 228.60 nm (iso absorptive point) and 239.60 nm (λ<sub>max</sub> of DSP) were measured and absorptivity coefficients were calculated using calibration curve.

The concentration of two drugs in the mixture can be calculated using following equations.

$$C_x = [(Q_M - Q_Y) / (Q_X - Q_Y)] \times A_1 / a_{x1} \text{ _____ (1)}$$

$$C_Y = [(Q_M - Q_X) / (Q_Y - Q_X)] \times A_1 / a_{y1} \text{ _____ (2)}$$

Where, A<sub>1</sub> and A<sub>2</sub> are absorbance of mixture at 228.60 nm and 239.60 nm; a<sub>x1</sub> and a<sub>y1</sub> are absorptivities of DSP and ATR at 228.60 nm; a<sub>x2</sub> and a<sub>y2</sub> are absorptivities of DSP and ATR respectively at 239.60 nm; Q<sub>M</sub> = A<sub>2</sub> / A<sub>1</sub>, Q<sub>X</sub> = a<sub>x2</sub> / a<sub>x1</sub> and Q<sub>Y</sub> = a<sub>y2</sub> / a<sub>y1</sub>.



**Figure 3: Overlain absorption spectra of DSP (239.60 nm) and ATR (257.60 nm) showing iso absorptive point (228.60 nm) in methanol.**

**VALIDATION**

The proposed method was validated according to the International Conference on Harmonization (ICH) guidelines.

**Linearity (Calibration Curve)**

The calibration curves were plotted over a concentration range of 2-6 µg/ml for DSP and 20-60 µg/ml ATR. Appropriate aliquots from the standard stock solutions of DSP and ATR were used to prepare two different sets of dilutions: Series A, and B as follows. Series A consisted of different concentration of DSP (2-6 µg/ml). Aliquot from the stock solution of DSP (100 µg/ml) was pipette out in to a series of 10 ml volumetric flask and diluted with methanol to get final concentration in range of 2-6 µg/ml (0.2, 0.3, 0.4, 0.5 and 0.6 ml). Series B consisted of varying concentrations of ATR (20-60 µg/ml). Appropriate volume of the stock solution of ATR (100 µg/ml) was transferred into a series of 10 ml volumetric flask and the volume was adjusted to the mark with methanol to get final concentration in range of 20-60 µg/ml (2.0,3.0,4.0,5.0 and 6.0 ml). The absorbances of

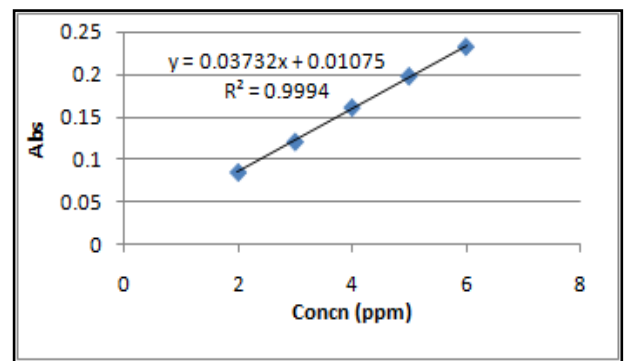
solution were then measured at 239.60nm and 228.60nm.(Table 1) The calibration curves were constructed by plotting absorbance versus concentration and the regression equations were calculated.(Figure 4 and 5)

**Table 1: Absorbance for DSP and ATR at 239.60nm and 228.60 nm, respectively**

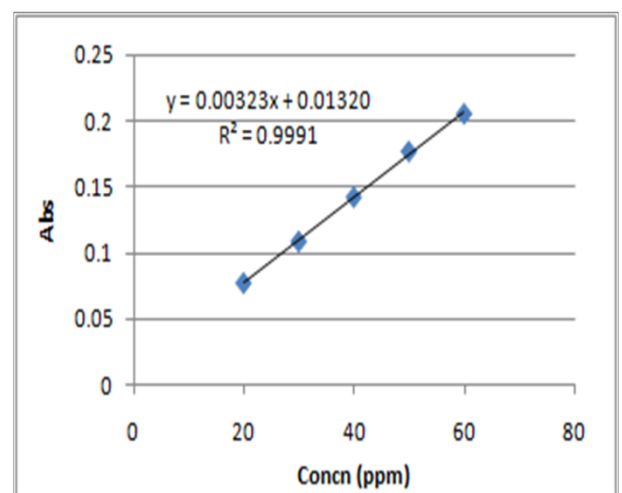
DSP			ATR		
Con c. µg/ml	At 228.60nm	At 239.60nm	Con c. µg/ml	At 228.60nm	At 239.60nm
2	0.0779±0.0016	0.0853±0.0068	20	0.0778±0.0062	0.0155±0.0012
3	0.1093±0.0020	0.1213±0.0059	30	0.1091±0.0096	0.0221±0.0016
4	0.1428±0.0024	0.1618±0.0071	40	0.1425±0.0021	0.0292±0.0014
5	0.1767±0.0018	0.1986±0.0083	50	0.1769±0.0038	0.0359±0.0021
6	0.2054±0.0019	0.2332±0.0046	60	0.2053±0.0033	0.0433±0.0034

$$y = 0.03732x + 0.01075 \text{ for DSP at 239.60nm _____ (3)}$$

$$y = 0.00323x + 0.01320 \text{ for ATR at 228.60nm _____ (4)}$$



**Fig.4: Calibration graph of Dexamethasone Sodium Phosphate at 239.60 nm**



**Fig.5: Calibration graph of Atropine Sulphate at 228.60 nm**

**Precision (Reproducibility)**

The intraday and interday precision of the proposed method was determined by analyzing the corresponding responses 3 times on the same day and on 3 different days over a period of 1 week for 3

different concentrations of standard solutions of DSP and ATR (2,4,6 µg/ml for DSP and 20, 40, 60µg/ml for ATR). The result was reported in terms of relative standard deviation (Table no 2 and 3)

**Table 2: Intraday precision data for estimation of DSP and ATR \*(n=3)**

Conc. (µg/ml)		Abs. ± SD *	% RSD	Abs. ±SD*	% RSD
DSP	ATR	DSP		ATR	
2	20	0.0875±0.00030	0.34	0.1425±0.00035	0.24
4	40	0.1677±0.00055	0.33	0.2457±0.00070	0.28
6	60	0.2524±0.00056	0.22	0.3683±0.00085	0.23

**Table 3: Interday precision data for estimation of DSP and ATR \*(n=3)**

Conc. (µg/ml)		Abs. ±SD*	% RSD	Abs. ±SD*	% RSD
DSP	ATR	DSP		ATR	
2	20	0.0868±0.00035	0.40	0.1420±0.00075	0.52
4	40	0.1682±0.00050	0.29	0.2472±0.00090	0.36
6	60	0.2522±0.00065	0.26	0.3680±0.00075	0.20

#### Accuracy (Recovery Study)

The accuracy of the method was determined by calculating the recoveries of DSP and ATR by the standard addition method. Known

amounts of standard solutions of DSP and ATR were added at 80, 100 and 120 % level to pre quantified sample solutions of DSP and ATR (2µg/ml for DSP and 20µg/ml for ATR). The amounts of DSP and ATR were estimated by applying obtained values to the respective regression line equations. Data given in table 4 and 5.

#### LOD and LOQ

The limit of detection (LOD) and the limit of quantification (LOQ) of the drug were derived by calculating the signal-to-noise ratio (S/N, i.e., 3.3 for LOD and 10 for LOQ) using the following equations designated by International Conference on Harmonization (ICH) guidelines.

$$\text{LOD} = 3.3 \times \sigma/S$$

$$\text{LOQ} = 10 \times \sigma/S$$

Where,  $\sigma$  = the standard deviation of the response and

S = slope of the calibration curve.

#### Robustness and Ruggedness

Different Instrument and different stock solution was used for Robustness and Ruggedness. No significant changes in the spectrums were observed, proving that the developed method is rugged and robust. (Given in table 6)

**Table 4: Recovery data of DSP \*(n=3)**

Conc. of DSP from formulation (µg/ml)	Amount of Std. DSP added (µg/ml)	Total amount of DSP (µg/ml)	Total amount of DSP found (µg/ml)* Mean ± SD	% Recovery	% RSD
2	1.6	3.6	3.58±0.016	99.67	0.45
2	2	4	4.02±0.007	100.61	0.18
2	2.4	4.4	4.39±0.015	99.83	0.34

**Table 5: Recovery data of ATR \*(n=3)**

Conc. of ATR from formulation (µg/ml)	Amount of Std. ATR added (µg/ml)	Total amount of ATR (µg/ml)	Total amount of ATR found (µg/ml)* Mean ± SD	% Recovery	% RSD
20	16	36	36.04±0.147	100.11	0.46
20	20	40	39.88±0.056	99.71	0.33
20	24	44	43.95±0.070	99.89	0.18

**Table 6: Robustness and Ruggedness data of DSP and ATR \*(n=3)**

Conc. (ppm)	Dexamethasone Sodium Phosphate (Mean abs. ±% RSD)			
	Instrument 1	Instrument 2	Stoke - 1*	Stoke - 2*
2	0.0867±0.59	0.0877±0.45	0.0878±0.28	0.0877±0.52
3	0.1278±0.29	0.1274±0.43	0.1278±0.35	0.1277±0.43
4	0.1662±0.30	0.1667±0.24	0.1657±0.36	0.1652±0.46
Atropine Sulphate (Mean abs. ±% RSD)				
20	0.1413±0.39	0.1416±0.52	0.1426±0.42	0.1415±0.45
30	0.1969±0.40	0.1967±0.38	0.1970±0.38	0.1977±0.30
40	0.2446±0.22	0.2448±0.22	0.2442±0.26	0.2436±0.17

#### Assay procedure

From the formulation 1ml transferred in 100 ml volumetric flask and made up to the mark with the Methanol. Stock solution contained 10µg/ml DSP and 100µg/ml ATR and from that pipette out 2 ml and transferred in 10 ml volumetric flask and made up to the mark with the Methanol. The absorbance of the sample solution i.e. A<sub>1</sub> and A<sub>2</sub> were recorded at 228.60 nm (iso absorptive point) and 239.60 nm ( $\lambda_{\text{max}}$  of DSP) respectively. (Given in table 7)

#### RESULTS AND DISCUSSION

The overlain UV absorption spectra of DSP (239.60 nm) and ATR (257.60 nm) showing iso absorptive point (228.60 nm) in methanol is shown in Figure 3. Accuracy was determined by calculating the recovery and the mean was determined (Table 4 and 5). The method

was successfully used to determine the amounts of DSP and ATR present in dosage forms. The results obtained were in good agreement with the corresponding labeled amount (Table 7). Precision was calculated as intra and inter day variations (% RSD) for both the drugs. Summary of validation parameters for method is given in Table 8. By observing the validation parameters, the method

was found to be simple, sensitive, accurate and precise. Hence the method can be employed for the routine analysis of these two drugs in combined dosage form.

#### CONCLUSION

The proposed spectrophotometric method was found to be simple, sensitive, accurate and precise for determination of DSP and ATR in dosage form. The method utilizes easily available and cheap solvent

for analysis of DSP and ATR hence the method was also economic for estimation of DSP and ATR from dosage form. % recoveries greater than 99 % shows that method is free from the interference of excipients used in the formulation

**Table7: Analysis data of formulation \*(n=3)**

Sr. No	Drug	Formulation (µg/ml)	% Assay ± SD*
1	DSP	2	100.12±0.80
2	ATR	20	100.64±0.61

**Table 8: Regression Analysis Data and Summary of Validation Parameters for DSP and ATR by Absorbance Ratio Method**

PARAMETERS	Absorption Ratio Method	
	DSP	ATR
Concentration range(µg/ml)	2-6	20-60
Regression equation	$y = 0.03732x + 0.01075$	$y = 0.00323x + 0.01320$
Correlation Coefficient(r <sup>2</sup> )	0.9994	0.9991
Accuracy(%Recovery) (n=3)	100.04	99.90
Intra-day Precision (%RSD) (n=3)	0.22-0.34	0.23-0.28
Inter-day precision (%RSD) (n=3)	0.26-0.40	0.20-0.52
LOD(µg/ml)	0.063	3.01
LOQ(µg/ml)	0.19	9.12
Ruggedness and Robustness	0.24-0.59	0.17-0.52

#### ACKNOWLEDGEMENT

I sincerely thankful to Shree Dhanvantary Pharmacy College, Kim, Surat, for providing infra structure facilities and moral support to carry out this research work. I thankful to our guide respected Dr. Hasumati A. Raj for her guidance, without them this was not possible. I also thank our colleagues for their helping hand.

#### REFERENCES

- Tripathi KD, Essentials of Medical Pharmacology, 6th ed. Jaypee Brothers Medical Publishers (P) Ltd; 2008. p. 280-287,106-110.
- Indian Pharmacopoeia, Govt. of India Ministry of Health and Family Welfare, 6th ed. The Indian Pharmacopoeia Commission Ghaziabad; 2010. vol.II, p. 852-853, 1175-1176.
- British Pharmacopoeia, The Department of Health, London: The Stationary Office; 2010. vol.I, p. 193-195, 647-649.
- The United States Pharmacopoeia (USP 32 NF 27) Asian ed. Rockville, MD: USP Convention Inc; 2009. vol.II, p. 1604, 2089-2090.
- The European Pharmacopoeia, 7th ed. published by the European Directorate for the Quality of Medicines & Health Care; 2011. vol.II, p. 1429-1430, 1812-1814.
- Wahbi AM and Ebel S, "The use of the first-derivative curves of absorption spectra in quantitative analysis." Anal. Chimica Acta. 1974; 70(1): 57-63.
- Polomik M, Sober M, Pleho A and Nikolin B, "Spectrophotometric determination of atropine sulfate in eye drops using bromthymol blue." Medicinski arhiv. 1993; 47(1-2): 25-27.
- Feldman JA and Robb BJ, "Colorimetric determination of atropine, homatropine, scopolamine, and their derivatives by the ferric hydroxamate method." J. Pharma. Sci. 1970; 59(11): 1646-1647.
- Oi -Wah Lau and Chuen-Shing Mok, "High performance liquid chromatographic determination of atropine and atropine like alkaloids in pharmaceutical preparations with indirect conductometric detection." J. Chromatogr. A. 1997; 766(1-2): 270-276.
- Raghuwanshi AS and Jain UK, "RP-HPLC method development for estimation of atropine sulphate in bulk." Oriental J. Chem. 2009; 25(3): 621-624.
- Bitar Y and Holzgrabe U, "Impurity profiling of atropine sulfate by microemulsion electrokinetic chromatography." J. Pharma. Biomed. Ana. 2007; 44(3): 623-633.
- Jia X et al., "Simultaneously determination of atropine sulphate, diphenhydramine hydrochloride, capsaicin and dihydrocapsaicin in pain-relieving plaster for arthritis by RP-HPLC." Zhongguo Zhong Yao Za Zhi. 2010; 35(21): 2838-2841.
- Kartal M et al., "LC determination of atropine sulfate and scopolamine hydrobromide in pharmaceuticals." J. Pharma. Biomed. Ana. 2001; 25(3-4): 399-406.
- Juhani P and Marco H, "Determination of atropine and obidoxime in automatic injection devices used as antidotes against nerve agent intoxication." J. Chromatogr. A. 1994; 686(2): 350-354.
- Pinzauti S et al., "Determination of atropine sulphate and benzalkonium chloride in eye drops by HPLC." Int. J. Pharma. 1993; 93(1-3): 239-243.
- Arvadiya AC and Dahivelker PP, "Development and validation of novel RP-UPLC method for estimation of atropine sulphate in pharmaceutical dosage form." Chem. Ind. Chem. Eng. Quarterly. 2013; 19(3): 333-337.
- Renuka Devi GN, Prathyusha V, Shanthakumari K and Rahaman SA, "Development and validation of UV spectrophotometric method for the estimation of dexamethasone sodium phosphate in bulk and pharmaceutical dosage form." Indo American J. Pharma. Res. 2013; 3(7): 5055-5061.
- Singh DK and Verma R, "Spectrophotometric determination of corticosteroids and its application in pharmaceutical formulation." Iranian J. Pharmacol. Thera. 2008; 7(1): 61-65.
- Chothani D, Bhalani J and Vadaliya KR, "Ratio derivative UV spectroscopy method for simultaneous estimation of moxifloxacin hydrochloride and dexamethasone sodium phosphate in pharmaceutical dosage form." Inventi Pharm Ana. Qua. Ass. 2013; 2013(2): 1-5.
- Bhalani J, Vadalia K and Dedania ZR, "Validated first and second order derivative UV spectrophotometric methods for simultaneous estimation of moxifloxacin hydrochloride and dexamethasone sodium phosphate in ophthalmic dosage form." Inventi Pharm Ana. Qua. Ass. 2012; 2012(4): 1-5.
- Dhumal DM, Shirkhedkar AA and Surana SJ, "Simultaneous estimation of moxifloxacin hydrochloride and dexamethasone sodium phosphate in bulk and in eye drops by UV spectrophotometry." Anal. Chem. Indian J. 2013; 12(3).
- Nepote AJ, Damiani PC and Oliviri AC, "Chemometrics assisted spectroscopic determination of vitamin B<sub>6</sub>, vitamin B<sub>12</sub> and dexamethasone in injectables." J. Pharma. Biomed. Ana. 2003; 31(4): 621 627.
- Jeyaseelan C and Joshi A, "Trace determination of dexamethasone sodium phosphate in pharmaceutical formulations by differential pulse polarography." Anal. Bioanal. Chem. 2002; 373(8): 772-776.
- Ghanbarpour A and Amini M, "Analysis of dexamethasone sodium phosphate injection and ophthalmic solution by HPLC, kinetic interpretation and determination of shelf life." J. Sci. 1995; 6(4): 226-230.
- Liu H et al., "Separation and determination of dexamethasone sodium phosphate in cochlear perilymph fluid by liquid chromatography with ultraviolet monitoring and electrospray ionization mass spectrometry characterization." J. Chromatogr. B Analyt. Technol. Biomed. Life sci. 2004; 805(2): 255-260.
- Kwak H and D'Amico D, "Determination of dexamethasone sodium phosphate in the vitreous by high performance liquid chromatography." Korean J. Ophthalmol. 1995; 9(2): 79-83.
- Gupta VD, "Chemical stability of dexamethasone sodium phosphate after reconstitution in 0.9% sodium chloride injection and storage in polypropylene syringes." Int. J. Pharma. Compounding. 2002; 6(5): 395-397.
- Karanam S and Katakam P, "HPLC-UV method for simultaneous determination of ofloxacin and dexamethasone sodium phosphate in bulk and pharmaceutical formulations." Int. J. Pharm. Pharma. Sci. 2012; 4(1): 415-418.
- Dabhi MJ et al., "Simultaneous determination of moxifloxacin hydrochloride and dexamethasone sodium phosphate in eye drops by HPLC and absorbance correction method." J. Chem. Pharma. Res. 2012; 4(10): 4462-4467.
- Dhumal DM, Shirkhedkar AA, Nerkar PP and Surana SJ, "Simultaneous estimation of moxifloxacin hydrochloride and

- dexamethasone sodium phosphate in bulk and in ophthalmic solution by RP-HPLC." *J. Chil. Chem. Soc.* 2012; 57(4): 1344-1347.
31. Pendela M, Hoogmartens J and Adams E, "Development of a liquid chromatographic method for ear drops containing neomycin sulphate, polymyxin B sulphate and dexamethasone sodium phosphate." *J. Pharma. Biomed. Ana.* 2004; 36(4): 751-757.
  32. Karanam S and Katakam P, "Simultaneous determination of gatifloxacin and dexamethasone sodium phosphate in bulk and pharmaceutical formulations by HPLC." *African J. Pharm. Pharmacol.* 2011; 5(17): 1990-1995.
  33. Katakam P and Karanam S, "Liquid chromatographic method for determination of moxifloxacin and dexamethasone sodium phosphate in eye drops." *Eurasian J. Anal. Chem.* 2012; 7(2): 89-95.
  34. Shadoul WA, Gad Kariem EA, Adam ME and Ibrahim KE, "Simultaneous determination of dexamethasone sodium phosphate and chloramphenicol in ophthalmic solutions." *Int. J. Chem. Sci. Tech.* 2011; 1(2): 60-69.
  35. Katakam P, Karanam S and Adiki SK, "Stability indicating HPLC method for simultaneous determination of dexamethasone sodium phosphate and chloramphenicol in bulk and formulations." *Int. J. Pharm. Pharma. Sci.* 2012; 4(4): 505-510.
  36. Katakam P and Karanam S, "Simultaneous determination of ciprofloxacin hydrochloride and dexamethasone sodium phosphate in eye drops by HPLC." *J. Chem.* 2012; 9(3): 1077-1084.
  37. Maradiya JK et al., "Validated HPTLC method for simultaneous determination of ofloxacin and dexamethasone sodium phosphate in eye drops." *World J. Pharm. Pharma. Sci.* 2013; 2(2): 593-600.
  38. Seid Y, Hymete A and Bekhit AA, "Application of a stability-indicating HPTLC method for simultaneous determination of chloramphenicol and dexamethasone sodium phosphate in eye drop." *Thai J. Pharma. Sci.* 2012; 36(3): 94.