

FORMULATION DEVELOPMENT AND EVALUATION OF GASTRO-RETENTIVE DOSAGE FORM OF ATAZANAVIR SULPHATE

HEMANT K. JAIN*, MADHURI TAWARE

Department of Quality Assurance Techniques, Sinhgad College of Pharmacy, Vadgaon (Bk.), Pune 411041, Maharashtra, India
Email: hemantkjain2001@yahoo.co.in

Received: 07 Jul 2017 Revised and Accepted: 22 Nov 2017

ABSTRACT

Objective: To improve dissolution properties of atazanavir sulphate by preparing gastro-retentive granules by solid dispersion method and development of RP-HPLC method for estimation of this drug.

Methods: Estimation of atazanavir sulphate was done using high performance liquid chromatography (HPLC) on inertsil column (5 μ m, 250x4, 6 mm) with a mobile phase consists of methanol: water (91:9 v/v), at 0.5 ml/min flow rate and 249 nm UV detection. The method was validated as per ICH guidelines. Selection of the carrier for gastro-retentive formulation was based on phase solubility study of the drug. Solid dispersions of gastro-retentive granules of different composition of drug and carrier, were prepared by the kneading, heating and solvent evaporation. A 3² factorial design was applied to optimize the gastro-retentive formulation. The amounts of polyethylene glycol 6000 (PEG 6000) (X1) and hydroxypropyl methyl cellulose (HPMC) (X2) were selected as independent variables and *in vitro*-release at 5, 9 h and total floating time was selected as dependent variables.

Results: HPLC method was found to be linear in a concentration range of 10-60 μ g/ml of the drug ($r^2= 0.999$). The low value of % RSD in precision study indicates reproducibility of the method. The low value of LOD and LOQ suggests the sensitivity of the method. The solubility enhancement study of drug with various carriers followed descending order of solubility [Gelucire 44/14>PEG 6000>polyvinyl pyrrolidone (PVP)]. Highest % cumulative release was observed for the heating method at drug polymer (PEG 6000) ratio 1:5. Hence, this ratio has been selected for preparation of solid dispersion. From comparison of dissolution profile of formulated batches, formulation F4 [containing PEG6000 (1.6 g) and HPMC (200 mg)] showed promising dissolution parameters with desired floating properties.

Conclusion: Results obtained by validation studies suggested that the developed HPLC method is simple, accurate, precise and can be used for routine analysis of atazanavir sulphate formulation. Results of evaluation of prepared batches indicate that batch F4 is a promising formulation for gastro-retentive dosage form of drug.

Keywords: Atazanavir sulphate, Formulation development, Gastro-retentive dosage form, Floating granules, RP-HPLC, Validation

© 2018 The Authors. Published by Innovare Academic Sciences Pvt Ltd. This is an open access article under the CC BY license (<http://creativecommons.org/licenses/by/4.0/>)
DOI: <http://dx.doi.org/10.22159/ijpps.2018v10i1.21179>

INTRODUCTION

Approx. 35 million people were died from acquired immuno deficiency syndrome (AIDS) related illnesses since start of the epidemic and about 36.7 million people were living with human immunodeficiency virus (HIV) infection during December 2015 throughout the world. The number of HIV infected patients is increasing every year [1]. In this context, an effective drug therapy is needed for the treatment of this infection. Atazanavir sulphate is a novel azapeptide HIV protease inhibitor with high specificity which prevents multiplication of HIV [2]. Atazanavir sulphate is chemically (3*S*,8*S*,9*S*,12*S*)-3,12-bis(1,1-dimethylethyl)-8-hydroxy-4,11-dioxo-9-(phenylmethyl)-6-[[4-(2-pyridinyl)phenyl]methyl]-2,5,6,10,13-penta azatetradecanedioic acid dimethyl ester, sulphate (1:1) [3]. Atazanavir sulphate is an antiretroviral drug which belongs to BCS

class-2 drugs, associated with poor solubility. Atazanavir sulphate has less bioavailability due to pH-dependent solubility and absorption [4, 5].

Therefore, there is need to increase the solubility of this drug. Various techniques are used for solubility enhancement of poorly soluble drugs [6, 7]. Solid dispersion method has been selected in this project for solubility enhancement by preparing pH dependent floating granules.

Some methods have been reported for determination of atazanavir sulphate by HPLC [8-12]. In order to reduce the cost of analysis an economical HPLC method has been developed. This paper presents formulation development of gastro-retentive granules of atazanavir sulphate as well as development and validation of RP-HPLC method for estimation of this drug.

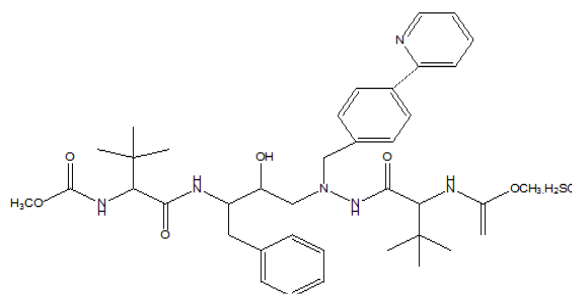


Fig. 1: Chemical structure of atazanavir sulphate

MATERIALS AND METHODS

Materials

Commercially available tablets of atazanavir sulphate (EVOTAZ contain 300 mg) were procured from local market and atazanavir sulphate API was obtained from an approved supplier. HPLC grade solvents used for analysis were obtained from Loba Chemie Pvt. Ltd., Mumbai, India. Excipients like hydroxy propyl methyl cellulose, polyethylene glycol 6000, gelucire 44/14 were obtained from Analab Fine Chemicals Pvt. Ltd, Mumbai. Polyvinyl pyrrolidone was obtained from Himedia Laboratory Pvt. Ltd. Sodium bicarbonate, magnesium stearate and talc were obtained from Loba Chemie Pvt. Ltd., Mumbai, India.

Instruments

Shimadzu AY-120 balance and Labindia DS 8000 dissolution test apparatus were used for this work. Analytical method was developed on Inertsil (5 µm, 250x4, 6 mm) column using Shimadzu LC 2010 CHT quaternary HPLC system with automatic injection facility, LC solution software and UV-Visible detector.

Preparation of standard stock solution

100 mg of atazanavir sulphate was weighed accurately and transferred into 100 ml of volumetric flask. About 50 ml of methanol was added to dissolve the content followed by sonication for 10 min. The final volume was adjusted to mark with methanol and mixed well to obtain standard stock solution.

Assay of tablets

Twenty tablets were weighed and average weight of a tablet was calculated. These tablets were crushed in a glass mortar. An accurately weighed amount of powder equivalent to 100 mg of drug was transferred to a 100 ml of volumetric flask and 30 ml of methanol was added to it. Then the mixture was sonicated for 15 min. and diluted up to mark with the methanol. This solution was filtered through 0.45µ watman filter paper and further diluted to obtain 60 µg/ml solutions with the same diluent. This procedure was repeated in triplicate. The results of the assay of tablets are shown in table 4.

Validation of the method

The developed chromatographic method was validated for system suitability, linearity, range, accuracy, precision, LOD, LOQ and robustness parameters as per ICH guidelines.

Linearity and range

Working standard solutions were injected in the range of 10-60 µg/ml under optimized chromatographic conditions and peak areas were calculated at 249 nm. A calibration curve was plotted between peak areas against concentrations of the drug. Linear regression data as well as calibration curve were shown in fig. 5.

Precision

Repeatability study was carried out with six replicates and intermediate precision studies were carried out with three concentrations of atazanavir sulphate with three replicates. The values of % relative standard deviation (% RSD) of precision study are shown in table 5.

Accuracy

The accuracy of the method was determined by calculating percent recovery of the drug by standard addition method. Percent recovery of atazanavir sulphate was determined at three different level 80%, 100%, and 120% of the target concentration in triplicate. The results of accuracy study are shown in table 6.

Robustness

Robustness of the optimized method was studied by changing flow rate (±0.1 ml/min), change in wavelength (±1 nm) and change in mobile phase composition (±1%) during analysis. The sample was

injected in triplicate for every condition and % RSD was calculated for each condition is shown in table 7.

Limit of detection (LOD) and limit of quantitation (LOQ)

Five sets of concentrations were prepared between 10-60 µg/ml and the corresponding areas of these concentration were measured. Calibration curves were plotted for each set. The standard deviation of the y-intercept and average slope of the calibration curve was used to calculate LOD and LOQ using following formulae.

$$LOD = \frac{3.3 \times SD}{S} \quad LOQ = \frac{10 \times SD}{S}$$

Where, SD is the standard deviation of y-intercepts of the calibration curves; S is the mean slope of six calibration curves. [13-15]

Formulation development

Before formulation, pre-formulation studies (organoleptic properties, solubility and drug excipient compatibility studies) were carried out.

Phase solubility study in different carriers

In order to determine the most suitable carrier for atazanavir sulphate, phase solubility study was carried out by adding excess of drug (30 mg) in aqueous solution (25 ml) with different carriers like PVP, PEG 6000, gelucire-44/14 at various concentration levels (5%, 10%, 15% w/v). The suspensions were continuously stirred on rotary shaker (Remi instruments Ltd) for 24 h at room temperature. The suspensions were filtered through a 0.45 µm Whatman filter paper. The filtrates were suitably diluted and analyzed for the dissolved drug by HPLC.

The Gibbs free energy of transfer (ΔG°_{tr}) of drug from pure water to the aqueous solution of carrier was calculated as follows:

$$\Delta G^\circ_{tr} = -2.303RT \log \frac{S_0}{S_s}$$

Where, S_0/S_s is the ratio of molar solubility of drug in aqueous solutions of carrier to that of the same medium without carrier. Results are shown in table 8 and fig. 6.

Preparation of solid dispersion

Solid dispersions were prepared by three different methods and their dissolution profiles were compared with pure atazanavir sulphate.

Melting method

Three solid-dispersion preparations containing different weight ratios of atazanavir sulphate in PVP, PEG 6000 and gelucire 44/14 (1:1, 1:3, 1:5) were prepared by the melting method. Atazanavir sulphate was added to the melted PVP, PEG 6000 and gelucire 44/14 at 50 °C and the resulting homogeneous preparation was rapidly cooled in a freezing mixture of ice and sodium chloride for 1 h. Subsequently, the dispersions were ground in a mortar and sieved through 60# sieve.

Solvent evaporation method

Solid dispersions of atazanavir sulphate in containing different weight ratios of PVP, PEG 6000 and gelucire 44/14 (1:1, 1:3, 1:5) were prepared by the solvent evaporation method. In this method, the drug was dissolved in minimum quantity of methanol and the carriers were added separately to each solution. The resulting mixtures were stirred for 15 min. and evaporated at a temperature of 45-50 °C on water bath until nearly dry. The evaporated products were ground in a mortar and passed through a sieve 60#.

Kneading method

Solid dispersions of atazanavir sulphate in PVP, PEG 6000, gelucire 44/14 in different ratios (1:1, 1:3, 1:5 w/w) were prepared by the kneading method. A mixture of PVP, PEG 6000, gelucire 44/14 and Atazanavir sulphate was wetted with water and kneaded thoroughly

for 30 min in a glass mortar. The paste formed was dried for 24 h. Dried powder was passed through 60# sieve.

Evaluation of solid dispersions

In vitro release of solid dispersions, API and marketed formulation

The release rate of atazanavir sulphate from solid dispersions, API and marketed formulation was determined. The dissolution test was performed using United States Pharmacopeia (USP) type II (paddle) apparatus containing 900 ml of 0.05M citrate buffer (pH-2.8) maintained at 37±0.5 °C and 75 rpm. A sample (5 ml) of the solution was withdrawn from the dissolution apparatus at different time interval viz. 5, 10, 15, 30, 45, 60 min and volume of the sample was replaced with fresh dissolution medium. The samples were filtered through a membrane filter (0.45-µm) and diluted to a suitable concentration with 0.05M citrate buffer. Concentration of these solutions was measured by HPLC. Cumulative percentage drug release was calculated. Results for *in vitro* release of solid dispersions, API and marketed formulation are presented in table 9, 10 and fig. 7, respectively.

Drug content study of prepared solid dispersions

About 20 mg of each preparation was placed in a 25 ml volumetric flask. Methanol (10 ml) was added, mixed thoroughly and sonicated for 30 min. The volume was made up to the mark with methanol and then filtered by a Whatman filter paper (0.45 µm pore size). The solution was suitably diluted with the same solvent and the drug content was assayed by HPLC. The percentage drug content was calculated for all batches using following equation:

$$\text{Drug content} = \left[\frac{\text{Drug}_{\text{actual}}}{\text{Drug}_{\text{theoretical}}} \right] \times 100$$

Where, drug_{actual} is the actual drug content in 20 mg product and drug_{theoretical} is the theoretical amount of Atazanavir sulphate in 20 mg product. Results of drug content study are shown in table 11. [15-19]

Formulation of granules

Floating granules containing atazanavir sulphate were prepared using the melting technique. The drug: carrier ratio (1:5) used to prepare the formulation was selected on the basis of evaluation of

solid dispersion. The formulation batches were prepared on the basis of factorial design.

Factorial design

A 3² randomized reduced factorial design was used in this study and 2 factors were evaluated, each at 3 levels; experimental trials were performed at all 9 possible combinations. Quantities of PEG6000 (X1) and HPMC (X2) were selected as independent variables. Percentage release at 5, 9 h and total floating time were selected as dependent variables. The resulting data were fitted into Stat Ease, Inc. Design Expert 7.0.3 software and analyzed statistically using analysis of variance (ANOVA). The data were also subjected to counter plot methodology to determine the influence of PEG 6000 and HPMC on dependent variables. Total weight of granules of all batches was not constant because that would require the use of diluents for weight adjustment, which in turn may have caused variation in release profile. Thus, we did not alter the amount of diluents in the formulation to nullify any effect due to change in the proportion of diluents. All batches contained 300 mg Atazanavir sulphate, 10% w/w sodium bicarbonate, 2% w/w talc and 2% w/w magnesium stearate. X1 and X2 are the amounts of PEG6000 and HPMC, respectively.

Selected quantity of carrier PEG for each batch was taken as per factorial design and melted at 50 °C; drug was added to it and mixed thoroughly. Sustaining agent HPMC was added separately as per factorial design. These blends were then lubricated with magnesium stearate and talc (2% w/w each), mixed well and cooled to room temperature. The mass was passed through a 60# sieve to obtain the granules.

Evaluation of prepared batches

Drug content study

Drug content study of prepared batches was similarly performed as procedure of drug content study of prepared solid dispersions.

In vitro buoyancy and total floating time studies

The *in vitro* buoyancy was determined by floating lag time. The granules of each batch were placed in a 100 ml beaker containing 0.05M citrate buffer and the time required for the granules to rise to the surface was determined as floating lag time. The total floating time of granules of each batch were also recorded.

Table 1: Design layout of 3²factorial design

	Factors	Units	Levels		
			-1	0	+1
	PEG6000 (X1)	G	1.6	2	2.4
	HPMC (X2)	Mg	100	200	300
Response	Total floating time, % release at 5 h, % release at 9 h				

Table 2: Batches designed by using 3²factorial design

Ingredients	F1	F2	F3	F4	F5	F6	F7	F8	F9
Drug (mg)	300	300	300	300	300	300	300	300	300
PEG6000 (g)	1.6	2	2.4	1.6	2	2.4	1.6	2	2.4
HPMC (mg)	100	100	100	200	200	200	300	300	300
Sodium bicarbonate (mg)	210	250	290	220	260	310	230	270	320
Magnesium stearate (mg)	23	27	31	24	28	32	25	29	33
Talc (mg)	23	27	31	24	28	32	25	29	33
Total weight (g)	2.25	2.70	3.15	2.36	2.81	3.17	2.47	2.88	3.38

In vitro dissolution studies

The release rate of atazanavir sulphate from granules was performed under similar conditions as study of release rate from solid dispersions. A sample (5 ml) of the solution was withdrawn from the dissolution apparatus at different time interval viz. 1, 2, 3, 4, 5, 6, 7, 8, 9 h and volume of the sample was replaced with fresh dissolution medium. The samples were filtered through a membrane filter (0.45 µm) and diluted to a suitable concentration with 0.05M

citrate buffer. Concentration of these solutions was measured by HPLC. Cumulative percentage drug release was calculated. Results of *in vitro* dissolution studies of atazanavir sulphate are presented in table 12 and fig. 8. [20-23]

RESULTS AND DISCUSSION

Drug-excipients interaction studies

Drug-excipients interaction studies were performed using FTIR

spectrophotometer. The FTIR spectra for the formulation and pure drug are shown in fig. 2 and fig. 3. Characteristics peaks obtained for the pure

drug correlated well with that of the formulation peaks. This indicated that the drug was compatible with the formulation components.

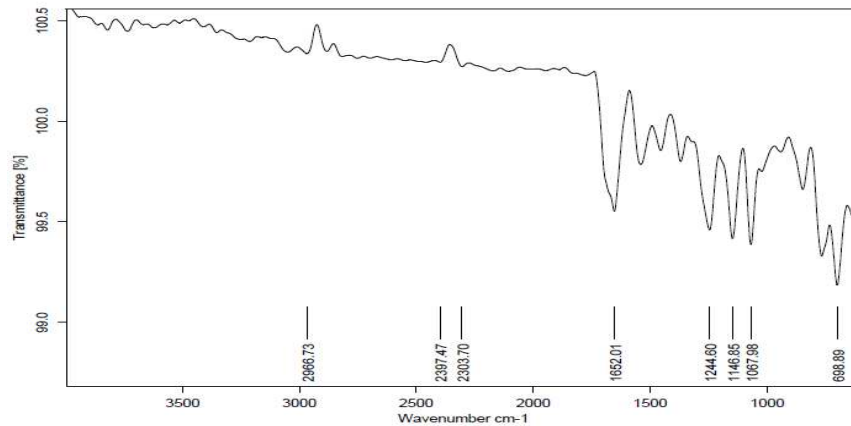


Fig. 2: IR spectrum of atazanavir sulphate

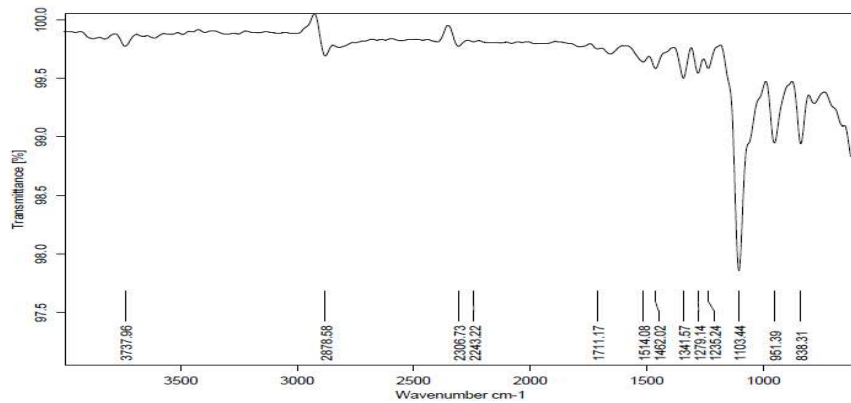


Fig. 3: IR spectrum of atazanavir sulphate formulation

Optimization of chromatographic conditions

Atazanavir sulphate was found to be soluble in methanol. Therefore, methanol was chosen as diluent. UV spectrum of atazanavir sulphate solution in methanol showed maximum absorbance was found at 249 nm.

Hence, 249 nm was selected for detection wavelength of this drug. Initially, various chromatographic conditions were tried in order to obtain better separation characteristics by changing mobile phase composition and pH.

Finally, mobile phase methanol: water (91:9 v/v) at the flow rate 0.5 ml/min was selected with UV detection at 249 nm. The retention time of atazanavir sulphate was found to be 6.61 min.

The chromatogram of atazanavir sulphate is shown in fig. 4 and optimized chromatographic conditions are mentioned in table 3.

Assay of tablet formulation

The drug content was calculated as an average of three determinations and assay results were shown in table 4. The results were close to the labeled value of commercial tablets. The value of mean % drug was found to be 100.39 %, which is within acceptance criteria.

Validation of the method

The developed chromatographic method was validated for linearity, range, accuracy, precision, LOD-LOQ and robustness parameters as per ICH guidelines.

Linearity and range

The value of correlation coefficient for atazanavir sulphate (fig. 12) demonstrated the good relationship between peak areas and concentrations. Therefore, the developed method was linear in the concentration range of 10-60 µg/ml.

Table 3: Optimized chromatographic conditions

Parameters	Details
Mobile phase	methanol: water (91:9 v/v)
Column	Inertsil
Flow rate	0.5 ml/min
Detection	249 nm
Injection volume	20 µl
Run time	9 min
Retention time	6.61 min
Diluent	methanol: water (91:9 v/v)

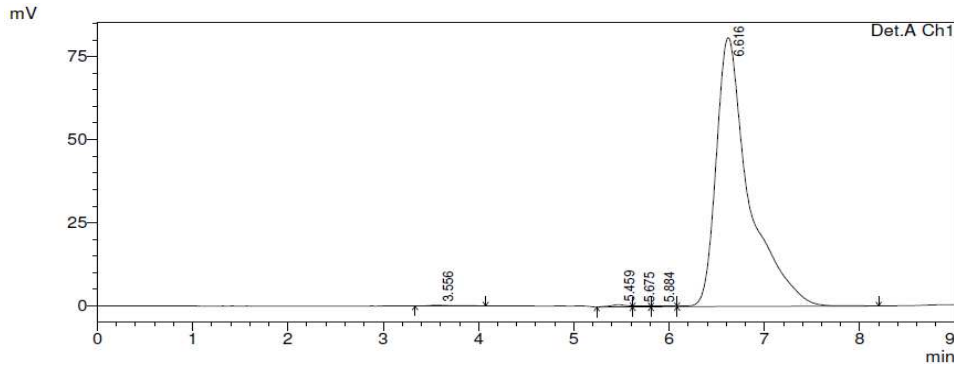


Fig. 4: Chromatogram of atazanavir sulphate

Table 4: Results of assay atazanavir sulphate

Sample solution concentration (µg/ml)	Area	Amount of % drug estimated	Mean % drug was found
60	2631049	101.64	
60	2599849	100.43	100.39
60	2566028	99.11	

*The value is represented as a mean of 3 observations. Amount of % drug estimated: Amount of percentage drug estimated, Mean % drug: Mean percentage drug

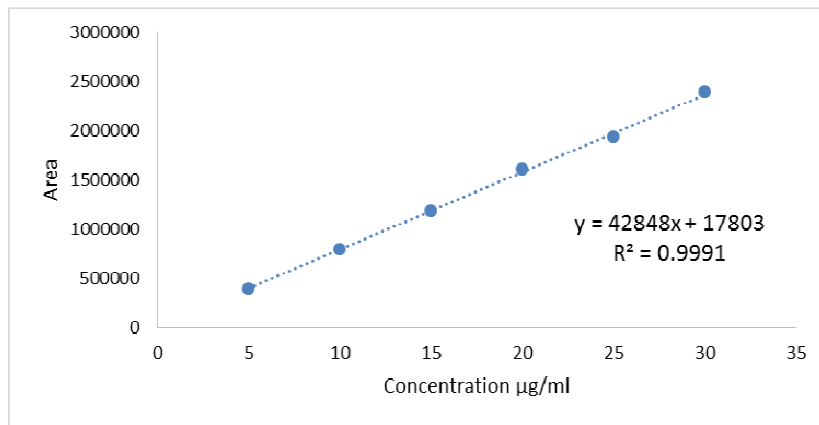


Fig. 5: Calibration curve of atazanavir sulphate in methanol: water (91:9 v/v)

Precision

The repeatability, intra-day precision was calculated as the relative standard deviation of results from three samples, during the same day and the inter-day precision was studied by comparing on two different days.

The method is precise and the % RSD values were within an acceptable limit.

Accuracy

The value of mean % recovery and % RSD at each level was found within acceptance criteria that indicate the method is accurate.

Robustness

The value of % RSD in robustness study was found to be within acceptance criteria which showed the reliability of the method.

Table 5: Repeatability and intermediate precision for atazanavir sulphate

Precision	Concentration of drug (µg/ml)	Mean area±SD*	% RSD
Repeatability *	60	2224683.67±7029.22	0.31
	10	482499.66±8278	1.71
	30	1320427.33±1414.87	0.107
Inter-day *	60	2749789±47764	1.73
	10	421672.55±4567	1.07
	30	1234366.89±1680.7	0.13
	60	2561397±5627.02	0.22

*Each value is represented as a mean±SD of n observations. The value of n is 6 for repeatability study and 3 for intraday and inter-day precision. SD: Standard deviation, %RSD: Percent relative standard deviation

Limit of detection (LOD) and limit of quantitation (LOQ)

The sensitivity of measurement of atazanavir sulphate by use of proposed method was estimated in terms of the limit of quantitation (LOQ) and limit of detection (LOD). The values of LOD and LOQ have been found to be 1.16 µg/ml and 3.45 µg/ml, respectively. These values show that method is sensitive.

Phase solubility study in carriers

Direct mixing of drug with carriers produces a direct contact of these components at the solid state leading to high concentration of

carrier at the surface of drug which acts as a driving force for the drug to get into solution by reducing the interfacial tension between the drug particles and solubilization solution. Plot of drug solubility against the concentration of carrier indicate a linear relationship of drug solubility in the investigated carrier concentration range. ΔG°_{tr} values were negative at all levels of carriers shows spontaneity of drug solubilization process. The values shows declining trend with increase in the carrier concentration suggesting that solubilization is more favorable at higher carrier concentration level. The solubility enhancement study of drug with various carriers followed descending order of solubility [Gelucire 44/14>PEG 6000>PVP].

Table 6: Accuracy of atazanavir sulphate

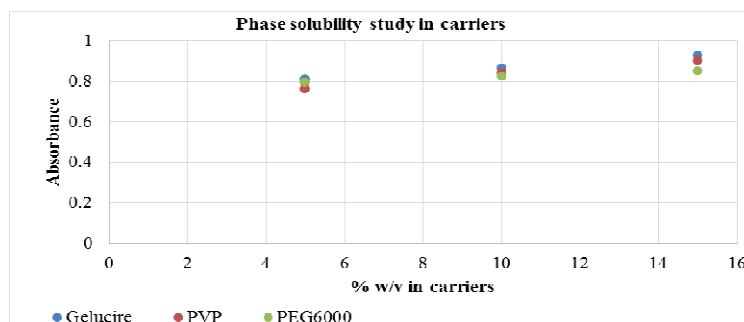
Level %	Amount taken (µg/ml)	% recovery	Mean % recovery
80	32	102.00 102.00 100.99	101.66
100	40	100.31 99.99 99.87	105.05
120	48	96.76 102.11 100.98	99.95

*Percent recovery was done in triplicate, % Recovery: Percent recovery, Mean % recovery: mean percent recovery

Table 7: Robustness study of atazanavir sulphate

Parameters	% RSD
A: Change in flow rate	
0.9 ml/min	1.46%
1 ml/min	
1.1 ml/min	
B: Change in Mobile Phase	
Methanol: water (90:10) v/v	1.42%
Methanol: water (91:9) v/v	
Methanol: water (92:8) v/v	
C: Change in wavelength	
248 nm	1.14%
249 nm	
250 nm	

*Each value is represented as % RSD of n observations. The value of n is 3 for change in flow rate, change in wavelength and change in mobile phase composition. %RSD: Percent relative standard deviation

**Fig. 6: Phase solubility study in carriers****Table 8: Phase solubility study in carriers**

Carrier	lipid concentration (% w/v)	Absorbance (mg/ml)	ΔG°_{tr}
PVP	5	0.051	-12.11
	10	0.054	-23.55
	15	0.055	-30.85
PEG 6000	5	0.051	-4.11
	10	0.057	-27.23
	15	0.064	-51.31
Gelucire 44/14	5	0.055	-19.81
	10	0.600	-37.89
	15	0.065	-54.46

Evaluation of solid dispersions

In vitro release of solid dispersions, API and marketed formulation

Dissolution of prepared solid dispersions carried out in a 0.05M citrate buffer. From the found data it is evident that dissolution of pure drug is low. % Cumulative release for API and marketed

formulation showed there 66.51 and 85.59 % at 60 min, respectively. Solid dispersions of atazanavir sulphate significantly enhanced the dissolution rate of drug within 60 min. as compared to the drug and marketed preparation.

Highest % cumulative release (about 98.03 %) was observed for the heating method at drug polymer (PEG 6000) ratio 1:5. Hence, this ratio has been selected for preparation of solid dispersion.

Table 9: *In vitro* release of solid dispersions

Method and ratio	PEG 6000 % release at 60 min	PVP % release at 60 min	Gelucire 44/14 % release at 60 min
1:1 Solvent evaporation	72.50	61.36	67.17
1:3 Solvent evaporation	75.44	65.51	69.27
1:5 Solvent evaporation	95.87	87.39	93.80
1:1 Kneading	69.62	86.33	63.40
1:3 Kneading	74.96	62.42	65.45
1:5 Kneading	92.65	57.51	89.32
1:1 Heating	77.75	64.88	68.83
1:3 Heating	74.46	69.74	73.25
1:5 Heating	98.03	90.58	95.77

Table 10: *In vitro* release of API, marketed preparation, 1:5 drug: carrier ration PEG 6000 solid dispersion

Time (min)	% Cumulative release		
	API	Marketed preparation	PEG solid dispersion
0	0	0	0
10	18.2	31.43	51.24
15	24.66	47.65	66.23
20	32.13	60.18	73.45
30	49.56	73.17	80.21
45	55.87	79.64	90.79
60	66.51	85.59	98.03

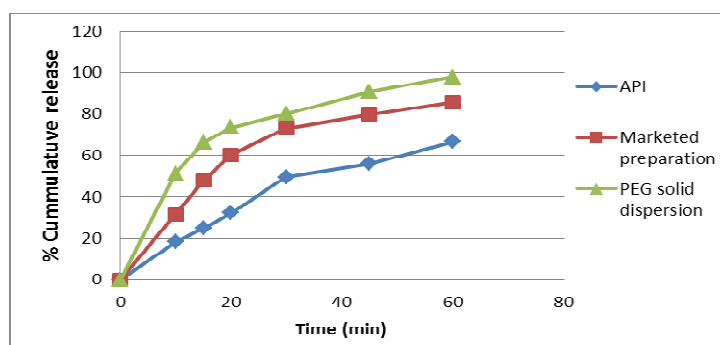


Fig. 7: Comparison of dissolution profile of API, marketed preparation, drug: carrier PEG 6000 (1:5) solid dispersion (n=3 for API, marketed preparation, drug: carrier PEG 6000 (1:5) solid dispersion)

Drug content study of prepared solid dispersions

Prepared solid dispersion from lipid PEG 6000, PVP, Gelucire 44/14 lipids with three different methods like kneading, solvent evaporation and melting at various concentrations with drug like 1:1, 1:3, 1:5 shows majorly drug content in between 94-97 %.

Evaluation of floating granules

Lag time and total floating time was noted visually. The evaluation of prepared floating granules batches showed that batches F1, F2, F4, F5, F7, F8, are having lag time between 30-41 s and total floating time between 20-24 h and batches F3, F6, F9 having lag time up to 150 s and total floating time between 15-18 h. This study suggested that as the quantity of PEG6000 and HPMC increased in the formulation, the lag time of granules increased and the total floating time decreased. Optimum quantities of HPMC and PEG6000 were selected in order to produce granules with good gel strength, entrapping carbon dioxide gas, imparting stable and persistent buoyancy.

Once the granules reaches to the surface, they remained buoyant due to which the granules lost their integrity and the size of the swollen matrix reduces because of disintegration and erosion. In fact, the floating time (buoyancy) of the granules is governed by the swelling (hydration) of the hydrocolloid particles on the granules surface when the granules contact the gastric fluids, which in turn results in an increase in the bulk volume.

These factors are essential for the granules to acquire a bulk density of less than 1 and remain buoyant on the gastric fluid. From the findings of the formulation batches, formulation F4 containing PEG6000 (1.6 g) and HPMC (200 mg) showed promising dissolution parameters (% cumulative release 52.52 % at 5 h and 99.03% at 9 h) with desired floating properties (minimum lag time and maximum total floating time about 35 s and 24 h, respectively). From the results, it was clear that the release rate was higher for formulations containing low level of PEG6000 and HPMC compared with other formulations containing higher level. This may be due to release retarding effect of PEG6000 and HPMC at higher concentration because drug may have entrapped

within carrier matrix causing a decrease in the rate of drug release. Therefore, required release rate of drug can be obtained by adjusting the composition of PEG6000 and HPMC.

From comparison of dissolution profile of formulated batches, batch F4 is considered as optimized formulation.

Factorial design

Results from ANOVA (Response Surface Linear model) for cumulative % release of 5, 9 h and total floating time are given in table 13, 14, 15 respectively and their respective counter plots are given in fig. 9, 10, 11, respectively.

Table 11: Drug content study of prepared solid dispersions

Method and ratio	PEG 6000 % drug yield	PVP % drug yield	Gelucire 44/14 % drug yield
1:1 Solvent evaporation	95	96	96
1:3 Solvent evaporation	95	97	97
1:5 Solvent evaporation	95	90	96
1:1 Kneading	96	90	90
1:3 Kneading	95	94	94
1:5 Kneading	94	89	94
1:1 Melting	97	95	95
1:3 Melting	96	94	89
1:5 Melting	96	96	97

Table 12: Evaluation of floating granules: Formulation and dissolution characteristics of batches in a 3² factorial design

Batch	Lag time (s)	Total floating time(h)	% release at 5 h	% release at 9 h	% Drug content
F 1	30	23	60.95	84.40	95
F 2	36	21	42.56	80.13	95
F 3	120	18	35.36	72.49	95
F 4	35	24	52.52	99.85	98
F 5	40	21	37.76	77.90	95
F 6	132	17	33.30	69.53	94
F 7	37	24	50.02	95.14	97
F 8	41	20	35.44	72.85	96
F 9	150	15	27.99	65.09	96

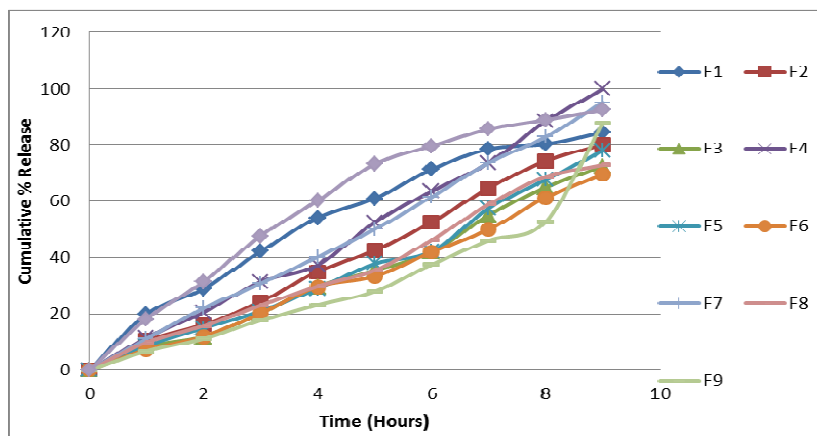


Fig. 8: Graphical representation of *In vitro* dissolution profile of formulations (n=3)

Formulation optimization has been done by using 3² factorial design to determine the effect of amount of PEG6000 (X1) and HPMC (X2) on independent variables like total floating time, % release at 5 and 9 h. Here counter plots are presented to show the effect X1 and X2 on dependent variables. The computer generated counter plots for the effect of factorial variables are shown in fig 10, 11, 12, respectively. The data demonstrate that both X1 and X2 affect the drug release and floating time. As the

amount of carrier in the formulation increases the drug release rate decreases. Hence, it can be concluded that drug release and total floating time may be changed by appropriate selection of X1 and X2 levels. **P-values<0.05 for total floating time, % release at 5 and 9 h 0.0003, 0.0069, 0.0001, respectively. Hence the ANOVA indicate that regression models were significant and valid for each considered response, proving that this factorial design model is significant.

Table 13: Analysis of variance-response for % release at 5 h

Source	Sum of squares	Df	Mean square	F value	p-value Prob>F	Significance
Model	852.29	2	426.15	43.56	0.0003	Significant
A-PEG 6000	107.70	1	107.70	11.01	0.0160	
B-HPMC	744.60	1	744.60	76.12	0.0001	
Residual	58.69	6	9.78			
Cor Total	910.99	8				

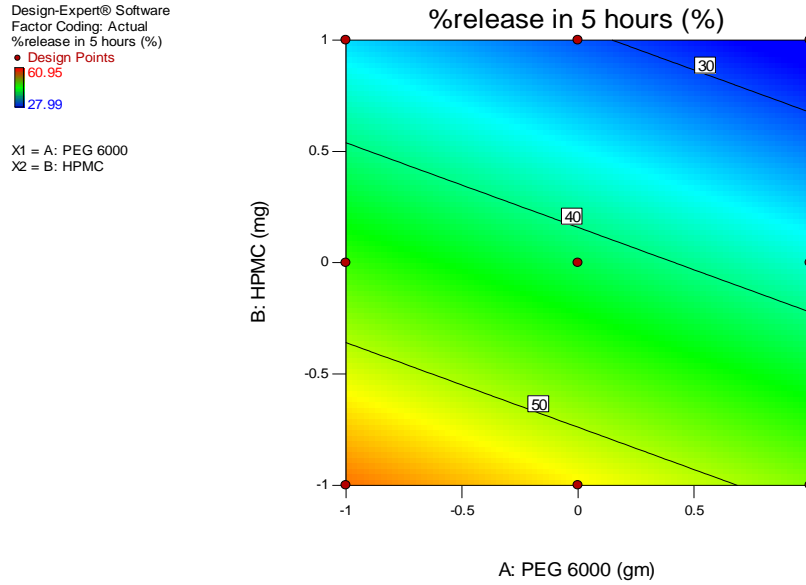


Fig. 9: Counter plot for cumulative % release at 5 h of formulations as function of PEG 6000 and HPMC

Table 14: Analysis of variance table-Response for % release at 9 h

Source	Sum of squares	Df	Mean square	F value	p-value Prob>F	Significance
Model	884.56	2	442.28	12.73	0.0069	Significant
A-PEG 6000	1.98	1	1.98	0.057	0.8191	
B-HPMC	882.58	1	882.58	25.40	0.0024	
Residual	208.44	6	34.74			
Cor Total	1093.01	8				

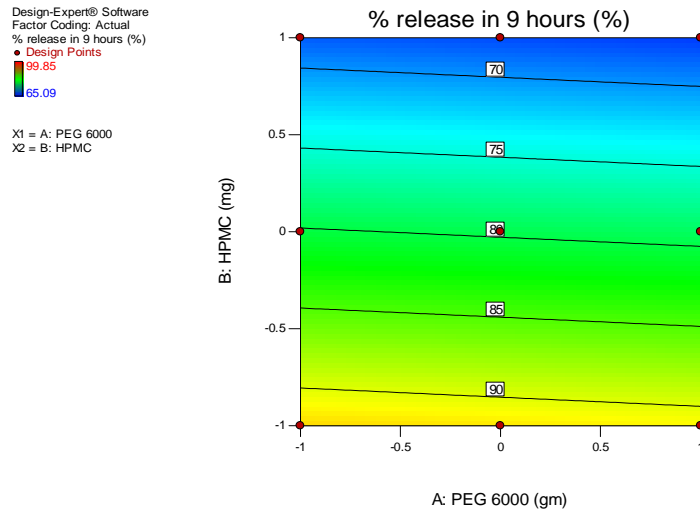


Fig. 10: Counter plot for cumulative % release at 9 h of formulations as function of PEG 6000 and HPMC

Table 15: Analysis of variance table-response for total floating time

Source	sum of squares	Df	Mean square	F value	p-value Prob>F	Significance
Model	79.00	3	26.33	131.67	<0.0001	Significant
A-PEG 6000	1.50	1	1.50	7.50	0.0409	
B-HPMC	73.50	1	73.50	367.50	<0.0001	
Residual	1.00	5	0.20			
Cor Total	80.00	8				

*Values of "Prob>F" less than 0.0500 indicate above model terms are significant

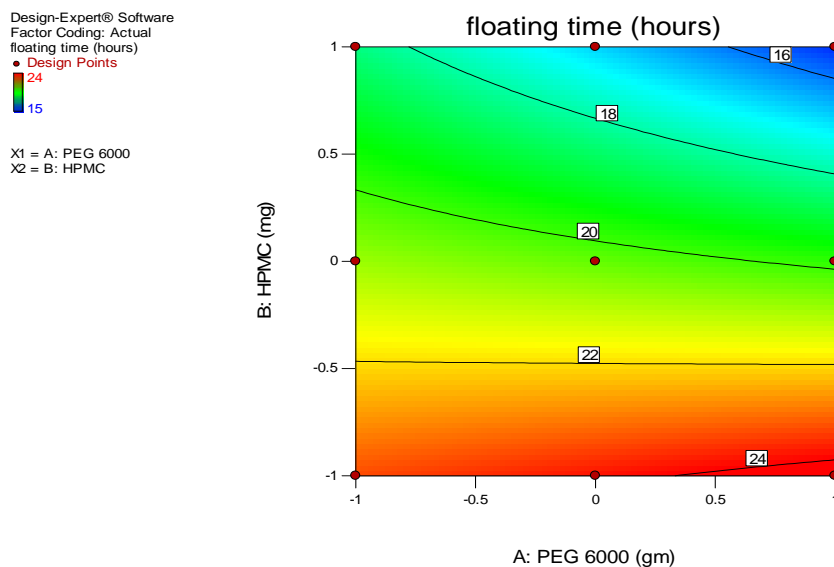


Fig. 11: Counter plot for total floating time of formulations as function of PEG 6000 and HPMC

CONCLUSION

Results obtained by validation studies suggested that the developed HPLC method is simple, accurate, precise can be used for routine analysis of atazanavir sulphate formulation. Selection of the carrier for gastro-retentive formulation was based on phase solubility study of the drug. Significant dissolution of drug was observed for solid dispersion by heating method at 1:5 ratio of drug and carrier PEG 6000. Gastro-retentive granules of atazanavir sulphate were developed by 3^2 factorial design. Results of evaluation of prepared batches indicate that batch F4 is a promising formulation for gastro-retentive dosage form of drug.

ACKNOWLEDGEMENT

Authors are grateful to Principal, Sinhgad College of Pharmacy, Pune for providing required facility to complete this project.

AUTHOR CONTRIBUTIONS

Both authors contributed equally to this work

CONFLICT OF INTERESTS

Declared none

REFERENCES

- UNAIDS report on the global AIDS epidemic; 2016. Available from: www.unaids.org/globalreport/default.htm. [Last accessed on 05 Jun 2017]
- Goldsmith D, Perry C. Atazanavir. *Drugs* 2003;16:1679-93.
- Raja A, Lebbos J, Kirkpatrick P. Atazanavir sulphate nature reviews. *News Anal* 2003;2:857-8.
- Kis O, Walmsley S, Bendayan R. *In vitro* and *in situ* evaluation of pH-dependence of atazanavir intestinal permeability and interactions with acid-reducing agents. *Springer Sci Business Media New York* 2014;31:2404-19.
- Saxena A, Padmanabhan S, Gautam S, Chowan G, Desikan S. Prediction of pH dependent absorption using *in vitro*, *in silico* and *in vivo* rat models: early liability assessment during lead optimization. *Eur J Pharm Sci* 2015;76:173-80.
- Kalepu S, Nekkanti V. Insoluble drug delivery strategies: review of recent advances and business prospects. *Acta Pharm Sin B* 2015;5:442-5.
- Savjani K, Gajjar A, Savjani J. Drug solubility: importance and enhancement techniques. *International Scholarly Research Network ISRN Pharmaceutics*; 2012. p. 1-10.
- Dey S, Patro S, Babu N, Murthy P, Panda S. Development and validation of a stability indicating RP-HPLC method for estimation of atazanavir sulphate in bulk. *J Pharm Anal* 2013;76:177-86.
- Bhirud S, Hiremath S. Stability indicating RP-HPLC method for the determination of atazanavir sulphate in bulk and dosage form. *Drug Invention Today* 2013;5:81-6.
- Seshachalam U, Rao N, Haribabu B, Chandrashekhar B. Determination of atazanavir in the presence of its degradation products by a stability indicating LC method. *Chromatographia* 2007;65:355-8.
- Cattaneo D, Maggioalo M, Ripamonti D, Perico P. Determination of atazanavir in human plasma by HPLC with UV Detection. *J Chromatographic Sci* 2008;46:485-9.
- Shrinivasu K, Rao J, Raju N, Mukkanti K. A validated RP-HPLC method for the determination of atazanavir in pharmaceutical dosage form. *J Chem* 2011;1:453-56.
- Jain HK, Ranjale R. Development and validation of RP-HPLC method for simultaneous estimation of cefoperazone and tazobactam in marketed formulation. *Int J Pharm Pharm Sci* 2014;6:462-5.
- Devkare PN, Jain HK. Development and validation of RP-HPLC method for simultaneous estimation of S(-) amlodipine besylate and clopidogrel bisulphate in tablet dosage form. *Int J Pharm Pharm Sci* 2013;5:770-5.
- ICH Harmonized-tripartite guidelines, validation of analytical procedure: text and methodology Q2 (R1); 2005.
- Sinha S, Ali M, Ali J. Solid dispersion as an approach for bioavailability enhancement of poorly water-soluble drug ritonavir. *PharmSciTech* 2010;2:518-27.
- Yadav P, Kumar V, Singh U, Bhat H, Mazumder B. Physicochemical characterization and *in vitro* dissolution studies of solid dispersions of ketoprofen with PVP K30 and D-mannitol. *Saudi Pharm J* 2013;21:77-84.
- Balata G, Mahdi M, Bakera R. Improvement of solubility and dissolution properties of clotrimazole by solid dispersions and inclusion complexes. *Indian J Pharm Sci* 2011;5:517-26.
- Hadiabdic J, Elezovic A, Rahic O, Mujezin I. Effect of cyclodextrin complexation on the aqueous solubility of diazepam and nitrazepam: phase-solubility analysis, thermodynamic properties. *Am J Anal Chem* 2012;3:811-20.
- Nama M, Gonugunta C, Veerareddy P. Formulation and evaluation of gastroretentive dosage forms of clarithromycin. *Pharm SciTech* 2008;9:521-35.

21. Gambhire M, Ambade K, Kurmi K, Kadam V, Jadhav K. Development and *in vitro* evaluation of an oral floating matrix tablet formulation of diltiazem hydrochloride. PharmSciTech 2007;3:1-9.
22. Shimpi S, Chauhan B, Mahadik K, Paradkar A. Preparation and evaluation of diltiazem hydrochloride-gelucire 43/01 floating granules prepared by melt granulation. PharmSciTech 2004;3:1-6.
23. Patel D, Patel N, Patel V, Bhatt D. Floating granules of ranitidine hydrochloride-gelucire 43/01: formulation optimization using factorial design. PharmSciTech 2007;2:1-7.